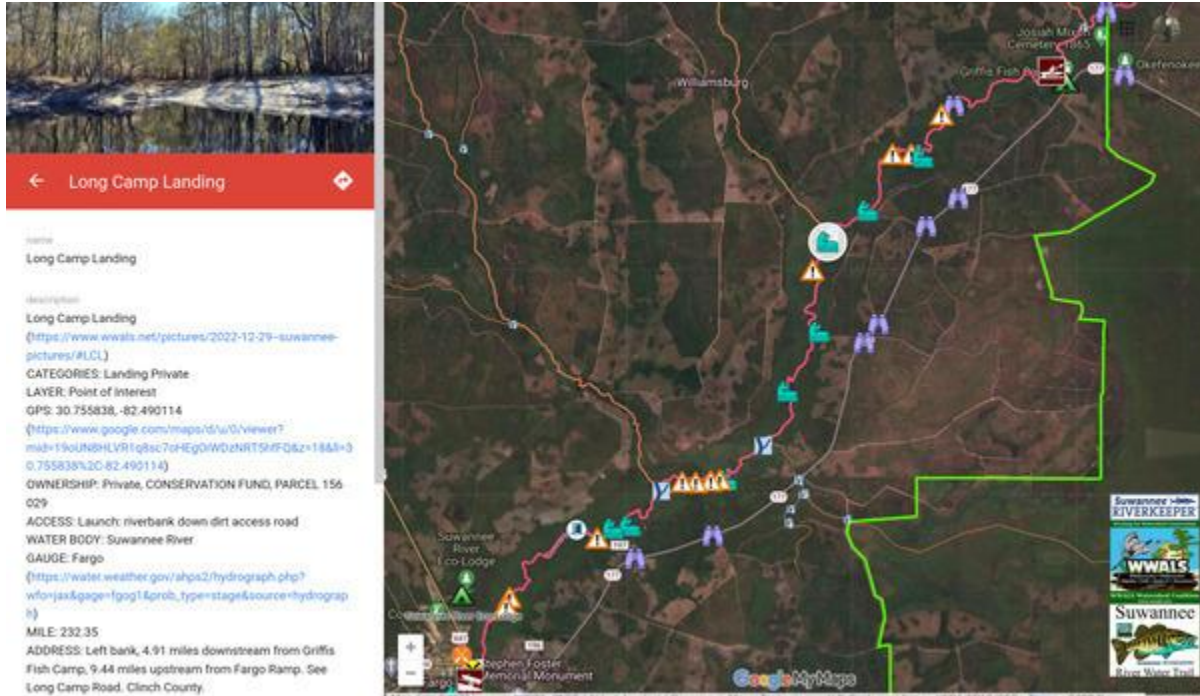


## Long Camp Landing:

The white circle highlights Long Camp Landing. It is even closer to a third of the way to Fargo. However, it does not have as direct an access road as Sport Camp Landing.



<https://www.google.com/maps/d/u/0/viewer?mid=19oUN8HLVR1q8sc7oHEgOiWDzNRT5hfFQ&il=30.736971546209737%2C-82.49656979392364&z=13>  
MILE: 232.35; 4.91 miles downstream from Griffis Fish Camp, 9.44 miles upstream from Fargo Ramp