

RIGHT - OF - WAY	TRACT NUMBERS	AL-TA-050.000	AL-TA-051.000	AL-TA-052.000	AL-TA-053.000	AL-TA-053.002.CR	AL-TA-053.001.CR	AL-TA-054.000	AL-TA-055.000	AL-TA-056.000	
	RODDAGE	56.4	15.5	52.1	38.8	9.9	556.64	87.3	49.5	9.6	
SURVEY DATA	SURVEY COMPANY:	[Blank]									
	FIELD BOOK:	[Blank]									
CLASS LOCATION	MINIMUM DEPTH OF COVER	CLASS 1									
	PIPE MATERIAL	3" SET ON WEIGHT, GPM, GEOTEXTILE PIPE WEIGHT									

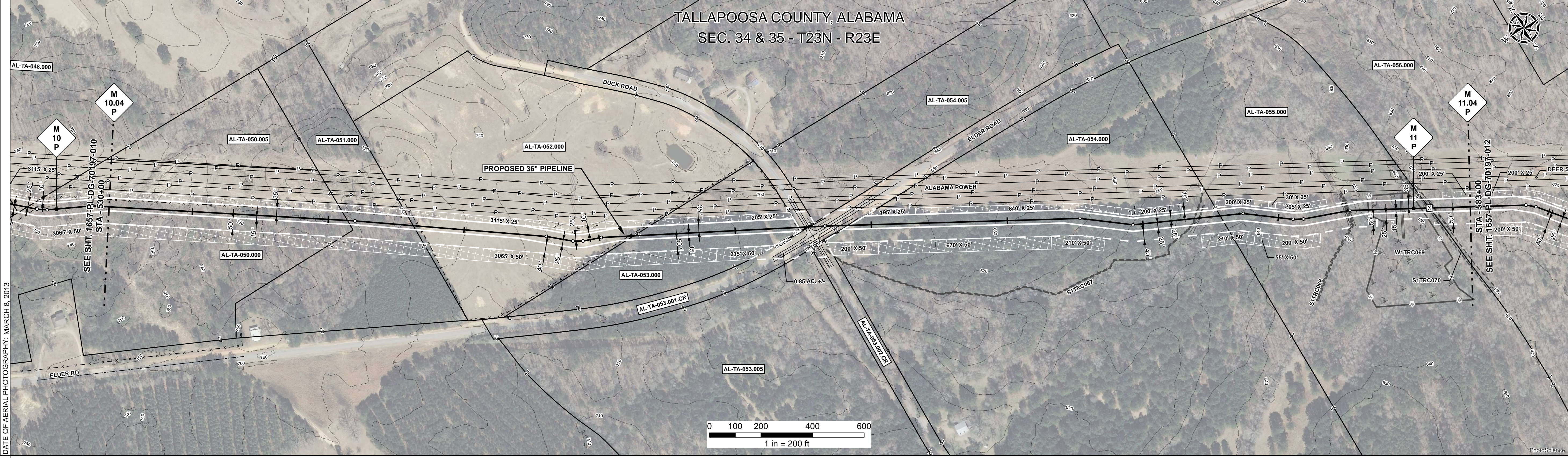
ALIGNMENT DETAIL

- PROPOSED PIPELINE
- PROPOSED PERMANENT EASEMENT
- TEMP WORKSPACE
- ADD. TEMP. WORKSPACE
- EASEMENT LINE
- CL STREAM/CREEK/DITCH
- EDGE OF WATER
- CL LEVEE
- FIELD DELINEATED WETLAND
- STREAM/DRAIN/WATERBODY BNDRY
- CL ROAD
- EDGE OF ROAD/PAVEMENT/CURB
- CL CULVERT
- CL RAILROAD
- ACCESS ROAD (PAR/TAR)
- STRUCTURE
- CONTOUR MAJOR (EVERY 10')
- PIPELINE MILEPOST
- PIPELINE MILEPOST 10TH
- PROPERTY LINE
- UNDERGROUND WATERLINE
- UNDERGROUND COM. CABLE
- UNDERGROUND POWERLINE
- UNDERGROUND SANITARY SEWER
- OVERHEAD POWERLINE
- OVERHEAD TELEPHONE
- VERIFIED PIPELINE
- FENCE
- TOP / TOE

SYMBOLS:

- TRANS. TOWER
- GUY ANCHOR
- HDD ENTRY/EXIT
- FIRE HYDRANT
- UTILITY POLE
- AERIAL MARKER
- ELEC. WATER, SAN. SEWER, GAS TELE. & STORM DRAIN MANHOLES
- WELL
- SEPTIC
- VALVE
- METER
- SPREAD BREAK

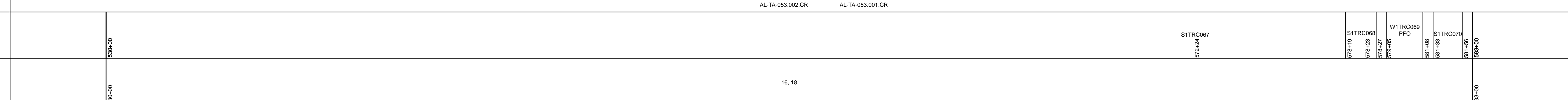
DATE OF AERIAL PHOTOGRAPHY: MARCH 8, 2013



REFERENCE DRAWING

ENVIRONMENTAL SURVEY DATA

SENSITIVE AREAS



PROFILE

SCALE:
HORIZONTAL: 1" = 200'
VERTICAL: 1" = 200'

THE LOCATION OF TRENCH PLUGS AND SLOPE BREAKERS ARE INTENDED TO BE USED AS A GUIDELINE ONLY. EXACT LOCATION TO BE DETERMINED IN THE FIELD AS DIRECTED BY THE CHIEF INSPECTOR.

SLOPE BREAKERS/ARROW INDICATES DIRECTION

TRENCH PLUG

CP TEST STATION

RECTIFIER

DECOUPLER

SLOPE BREAKER & TRENCH PLUG SPACING		
CODE	% SLOPE	SPACING
A	< 5%	NO STRUCTURE
B	5 - 15%	300 FT
C	15 - 30%	200 FT
D	> 30%	100 FT

REV	DRN	DATE	DESCRIPTION	ITEM NO.	DESCRIPTION	QTY
0		06/29/2015	ISSUED FOR BID	1	36" O.D. x 0.520" W.T., API 5L X70, FBE 16 MILS w/I.D. EPOXY 1.7 MILS	4980 LF
1		03/14/2016	ISSUED FOR CONSTRUCTION	3	36" O.D. x 0.750" W.T., API 5L X70, FBE 16 MILS w/I.D. EPOXY 1.7 MILS	90 LF
				4	36" O.D. x 0.750" W.T., API 5L X70, FBE 16 MILS, ARO 24 MILS, w/I.D. EPOXY 1.7 MILS	230 LF
				GPW	GEOTEXTILE PIPE WEIGHT, 9000 LBS	63 EA

DRAWN BY: GIE	ENGINEERING APPROVALS		SABAL TRAIL PROJECT PROPOSED 36" PIPELINE STA. 530+00 TO STA. 583+00 ALIGNMENT SHEET	
	CHECKED BY: GIE	DATE: 01/04/2016		
YEAR: 2017	SHEET: 11 OF 492	SCALE: 1" = 200'	DWG. 1657-PL-DG-70197-011	REV. 1

Document Path: G:\GIS\1657\Deliverables\Alignments\Sheet\1657-PL-DG-70197-011.mxd