

RIGHT - OF - WAY	TRACT NUMBERS	AL-CH-003.000	AL-CH-004.000	AL-CH-005.000	AL-CH-006.000
	RODDAGE	46.6	145.0	90.1	39.6
SURVEY DATA	SURVEY COMPANY:				
	FIELD BOOK:				
CLASS LOCATION	CLASS 1				
MINIMUM DEPTH OF COVER	3'				
PIPE MATERIAL	PIPE MATERIAL	3R			
	SET ON WEIGHT, GPM, GEOTEXTILE PIPE WEIGHT				

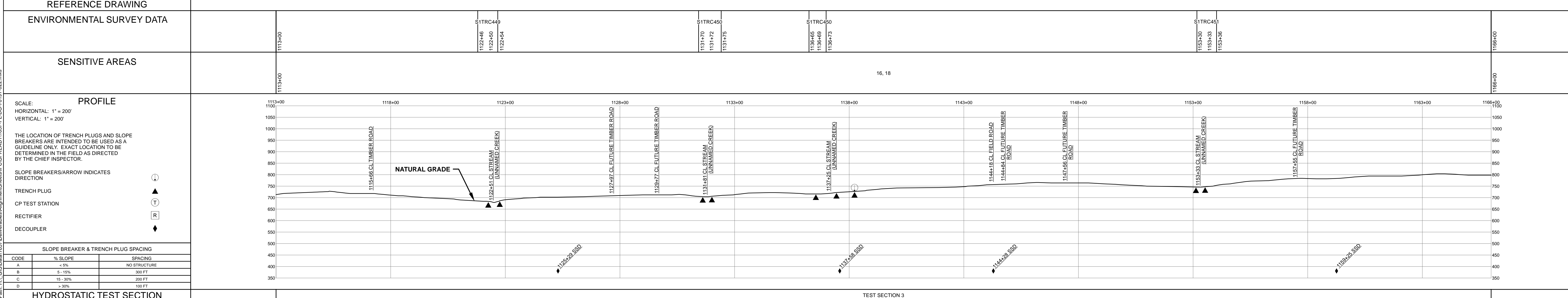
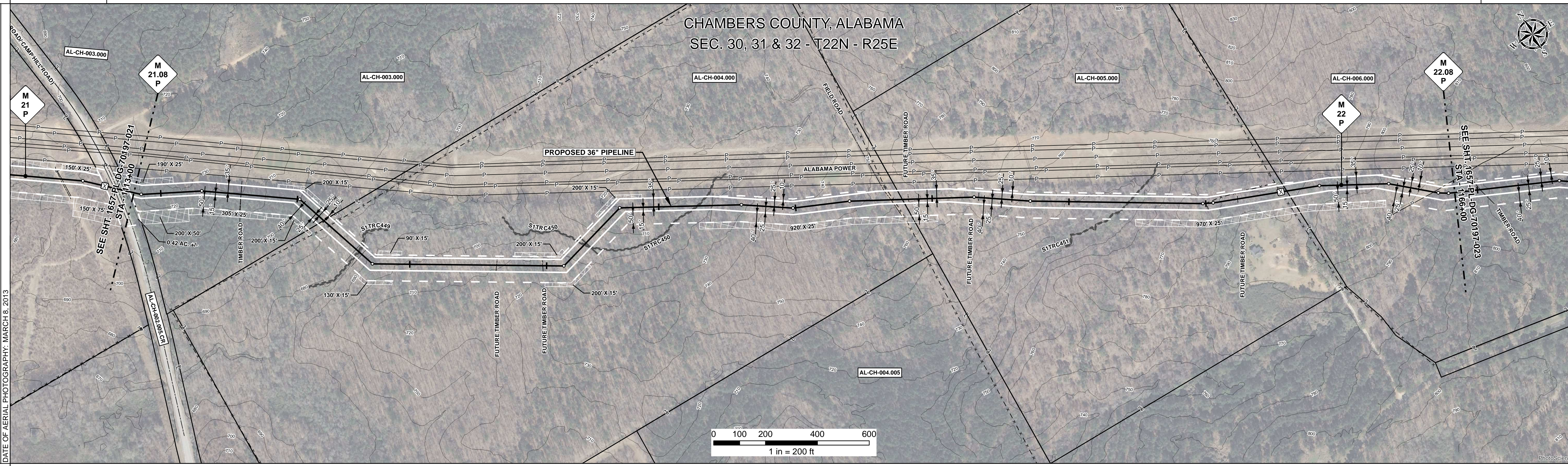
ALIGNMENT DETAIL

PROPOSED PIPELINE
 PROPOSED PERMANENT EASEMENT
 TEMP WORKSPACE
 ADD. TEMP WORKSPACE
 EASEMENT LINE
 CL STREAM/CREEK/DITCH
 EDGE OF WATER
 CL LEVEE
 FIELD DELINEATED WETLAND
 STREAM/DRAIN/WATERBODY BNDRY
 CL ROAD
 EDGE OF ROAD/PAVEMENT/CURB
 CL CULVERT
 CL RAILROAD
 ACCESS ROAD (PAR/TAR)
 STRUCTURE
 CONTOUR MAJOR (EVERY 10')
 PIPELINE MILEPOST
 PIPELINE MILEPOST 10TH
 PROPERTY LINE
 UNDERGROUND WATERLINE
 UNDERGROUND COM. CABLE
 UNDERGROUND POWERLINE
 UNDERGROUND SANITARY SEWER
 OVERHEAD POWERLINE
 OVERHEAD TELEPHONE
 VERIFIED PIPELINE
 FENCE
 TOP / TOE

TRANS. TOWER
 GUY ANCHOR
 HDD ENTRY/EXIT
 FIRE HYDRANT
 UTILITY POLE
 AERIAL MARKER
 ELEC. WATER, SAN. SEWER, GAS
 TELE. & STORM DRAIN MANHOLES

WELL
 SEPTIC
 VALVE
 METER
 SPREAD BREAK

DATE OF AERIAL PHOTOGRAPHY: MARCH 8, 2013



REFERENCE DRAWINGS		REVISIONS				MATERIALS		
DWG. NO.	DESCRIPTION	REV	DRN	DATE	DESCRIPTION	ITEM NO.	DESCRIPTION	QTY
		0		06/29/2015	ISSUED FOR BID	1	36" O.D. x 0.520" W.T., API 5L X70, FBE 16 MILS w/I.D. EPOXY 1.7 MILS	5250 LF
		1		03/14/2016	ISSUED FOR CONSTRUCTION	3	36" O.D. x 0.750" W.T., API 5L X70, FBE 16 MILS w/I.D. EPOXY 1.7 MILS	50 LF
						3R	3R ELBOW, HIGH STRENGTH WROUGHT BUTT-WELD FITTING, 36" O.D.	4 EA

ENGINEERING APPROVALS			
TITLE		DATE	
SIGNATURE	DATE	SIGNATURE	DATE
FRS	06/29/2015	FRS	03/14/2016
DRN DATE:	01/04/2016	CHECKED BY:	GIE
CHK. DATE:		CHK. DATE:	

SABAL TRAIL PROJECT
PROPOSED 36" PIPELINE
STA. 1113+00 TO STA. 1166+00
ALIGNMENT SHEET

LOC. CHAMBERS COUNTY, ALABAMA

YEAR: 2017 **SHEET:** 22 OF 492 **SCALE:** 1" = 200' **DWG.** 1657-PL-DG-70197-022 **REV.** 1

Document Path: H:\GIS\Drawings\Alignments\Chambers\1657-PL-DG-70197-022.mxd