

RIGHT - OF - WAY	TRACT NUMBERS	AL-CH-027.005	AL-CH-029.000	AL-CH-030.000	AL-CH-030.006.CR	AL-CH-031.000	AL-CH-032.000	AL-CH-033.000	AL-CH-033.005	AL-CH-033.010																																																			
	RODDAGE	24.1	25.5	4.0	70.5	47.6	127.4	20.9 Rods	1.2	1.2																																																			
SURVEY DATA	SURVEY COMPANY:	1431+00 1431+12 1431+17 1431+25 1431+32 1431+37 1431+42 1431+47 1431+52 1450+42 1450+47 1450+52 1450+57 1450+62 1450+67 1450+72 1450+77 1450+82 1450+87 1450+92 1450+97 1471+02 1471+07 1471+12 1471+17 1471+22 1471+27 1471+32 1471+37 1471+42 1471+47 1471+52 1471+57 1471+62 1471+67 1471+72 1471+77 1471+82 1471+87 1471+92 1471+97 1484+00 1484+05 1484+10 1484+15 1484+20 1484+25 1484+30 1484+35 1484+40 1484+45 1484+50 1484+55 1484+60 1484+65 1484+70 1484+75 1484+80 1484+85 1484+90 1484+95 1484+00 1484+05 1484+10 1484+15 1484+20 1484+25 1484+30 1484+35 1484+40 1484+45 1484+50 1484+55 1484+60 1484+65 1484+70 1484+75 1484+80 1484+85 1484+90 1484+95																																																											
	FIELD BOOK:	1431+00 1431+12 1431+17 1431+25 1431+32 1431+37 1431+42 1431+47 1431+52 1450+42 1450+47 1450+52 1450+57 1450+62 1450+67 1450+72 1450+77 1450+82 1450+87 1450+92 1450+97 1471+02 1471+07 1471+12 1471+17 1471+22 1471+27 1471+32 1471+37 1471+42 1471+47 1471+52 1471+57 1471+62 1471+67 1471+72 1471+77 1471+82 1471+87 1471+92 1471+97 1484+00 1484+05 1484+10 1484+15 1484+20 1484+25 1484+30 1484+35 1484+40 1484+45 1484+50 1484+55 1484+60 1484+65 1484+70 1484+75 1484+80 1484+85 1484+90 1484+95																																																											
CLASS LOCATION	CLASS 1	1431+52	CLASS 2				1450+42	CLASS 1																																																					
MINIMUM DEPTH OF COVER		3'	5'	3'	5'	3'	5'	3'	5'	3'																																																			
PIPE MATERIAL		1	2	3	4	5	6	7	8	9																																																			
	SET ON WEIGHT, GPW, GEOTEXTILE PIPE WEIGHT	1431+00	1431+12	1431+17	1431+25	1431+32	1431+37	1431+42	1431+47	1431+52	1450+42	1450+47	1450+52	1450+57	1450+62	1450+67	1450+72	1450+77	1450+82	1450+87	1450+92	1450+97	1471+02	1471+07	1471+12	1471+17	1471+22	1471+27	1471+32	1471+37	1471+42	1471+47	1471+52	1471+57	1471+62	1471+67	1471+72	1471+77	1471+82	1471+87	1471+92	1471+97	1484+00	1484+05	1484+10	1484+15	1484+20	1484+25	1484+30	1484+35	1484+40	1484+45	1484+50	1484+55	1484+60	1484+65	1484+70	1484+75	1484+80	1484+85	1484+90

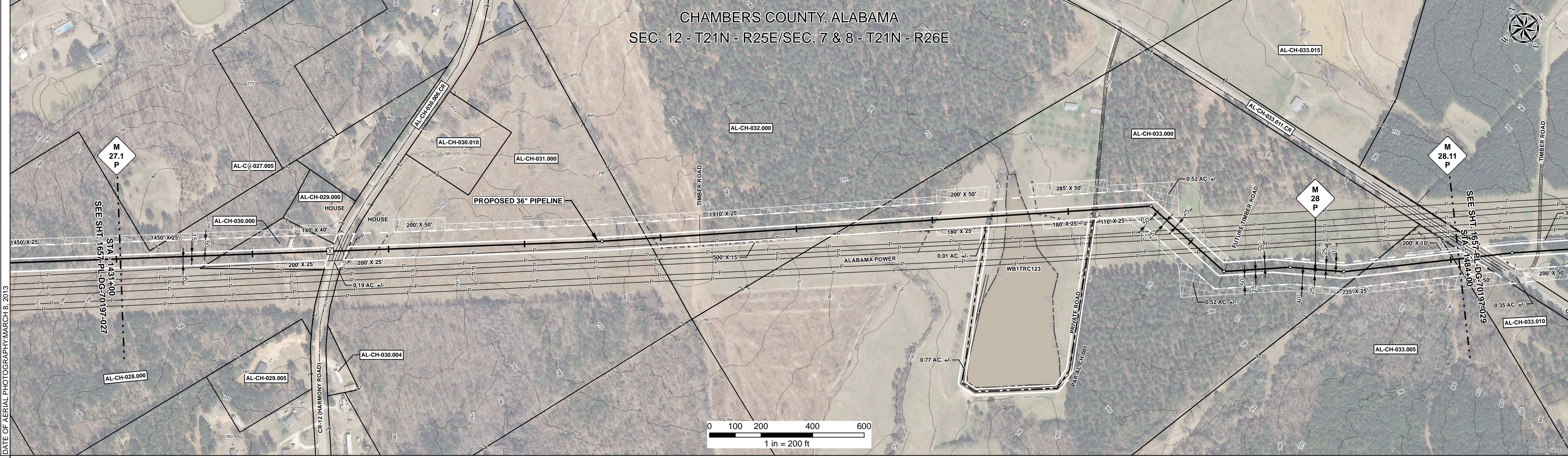
ALIGNMENT DETAIL

PROPOSED PIPELINE
 PROPOSED PERMANENT EASEMENT
 TEMP WORKSPACE
 ADD. TEMP WORKSPACE
 EASEMENT LINE
 CL STREAM/CREEK/DITCH
 EDGE OF WATER
 CL LEVEE
 FIELD DELINEATED WETLAND
 STREAM/DRAIN/WATERBODY BNDRY
 CL ROAD
 EDGE OF ROAD/PAVEMENT/CURB
 CL CULVERT
 CL RAILROAD
 ACCESS ROAD (PAR/TAR)
 STRUCTURE
 CONTOUR MAJOR (EVERY 10')
 PIPELINE MILEPOST
 PIPELINE MILEPOST 10TH
 PROPERTY LINE
 UNDERGROUND WATERLINE
 UNDERGROUND COM. CABLE
 UNDERGROUND POWERLINE
 UNDERGROUND SANITARY SEWER
 OVERHEAD POWERLINE
 OVERHEAD TELEPHONE
 VERIFIED PIPELINE
 FENCE
 TOP / TOE

TRANS. TOWER
 GUY ANCHOR
 HDD ENTRY/EXIT
 FIRE HYDRANT
 UTILITY POLE
 AERIAL MARKER
 ELEC. WATER, SAN. SEWER, GAS
 TELE. & STORM DRAIN MANHOLES

WELL
 SEPTIC
 VALVE
 METER
 SPREAD BREAK

DATE OF AERIAL PHOTOGRAPHY: MARCH 8, 2013



REFERENCE DRAWING
 1657-PL-DG-32452 AL-CH-030.006.CR

ENVIRONMENTAL SURVEY DATA

SENSITIVE AREAS

PROFILE

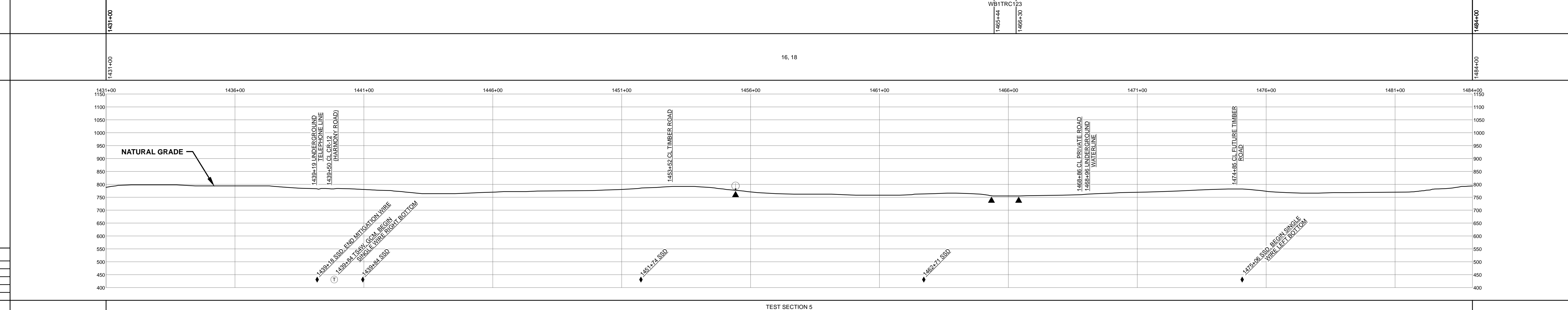
SCALE:
 HORIZONTAL: 1" = 200'
 VERTICAL: 1" = 200'

THE LOCATION OF TRENCH PLUGS AND SLOPE BREAKERS ARE INTENDED TO BE USED AS A GUIDELINE ONLY. EXACT LOCATION TO BE DETERMINED IN THE FIELD AS DIRECTED BY THE CHIEF INSPECTOR.

SLOPE BREAKERS/ARROW INDICATES DIRECTION

TRENCH PLUG
 CP TEST STATION
 RECTIFIER
 DECOUPLER

SLOPE BREAKER & TRENCH PLUG SPACING		
CODE	% SLOPE	SPACING
A	< 5%	NO STRUCTURE
B	5 - 15%	300 FT
C	15 - 30%	200 FT
D	> 30%	100 FT



HYDROSTATIC TEST SECTION

DWG. NO.	DESCRIPTION	REV	DRN	DATE	REVISIONS	ITEM NO.	DESCRIPTION	QTY
		0		06/29/2015	ISSUED FOR BID	1	36" O.D. x 0.520" W.T., API 5L X70, FBE 16 MILS w/I.D. EPOXY 1.7 MILS	3225 LF
		1		03/14/2016	ISSUED FOR CONSTRUCTION	2	36" O.D. x 0.625" W.T., API 5L X70, FBE 16 MILS w/I.D. EPOXY 1.7 MILS	1868 LF
						3	36" O.D. x 0.750" W.T., API 5L X70, FBE 16 MILS w/I.D. EPOXY 1.7 MILS	105 LF
						4	36" O.D. x 0.750" W.T., API 5L X70, FBE 16 MILS, ARO 24 MILS, w/I.D. EPOXY 1.7 MILS	102 LF
						3R	3R ELBOW, HIGH STRENGTH WROUGHT BUTT-WELDED FITTING, 36" O.D.	2 EA
						GPW	GEOTEXTILE PIPE WEIGHT, 8000 LBS	6 EA

REVISIONS

REV	DRN	DATE	DESCRIPTION
0		06/29/2015	ISSUED FOR BID
1		03/14/2016	ISSUED FOR CONSTRUCTION

ENGINEERING APPROVALS

TITLE	BID		CONSTRUCTION	
	SIGNATURE	DATE	SIGNATURE	DATE
DRAWN BY: GIE	FSR	06/29/2015	FSR	03/14/2016
DRN. DATE: 01/04/2016				
CHECKED BY: GIE	DRS	06/29/2015	JC	03/14/2016
CHK. DATE:				

**SABAL TRAIL PROJECT
 PROPOSED 36" PIPELINE
 STA. 1431+00 TO STA. 1484+00
 ALIGNMENT SHEET**

LOC. CHAMBERS COUNTY, ALABAMA

YEAR: 2017 SHEET: 28 of 492 SCALE: 1" = 200' DWG. 1657-PL-DG-70197-028 REV. 1

Document Path: H:\GIS\1657-Deliverables\Alignment\Drawings\1657-PL-DG-70197-028.mxd