

RIGHT - OF - WAY		CROSSING		TRACT NUMBERS		RODDAGE		SURVEY DATA	
				AL-CH-054.000		AL-CH-055.000		AL-CH-055.010.CR	
				AL-CH-056.000		AL-CH-057.000			
SURVEY COMPANY:		FIELD BOOK:		PAGES:		CLASS LOCATION		MINIMUM DEPTH OF COVER	
						CLASS 1			
PIPE MATERIAL		PIPE MATERIAL		PIPE MATERIAL		PIPE MATERIAL		PIPE MATERIAL	
- 3R, FITTING		①		①		①		①	
SET ON WEIGHT, GPW, GEOTEXTILE PIPE WEIGHT									

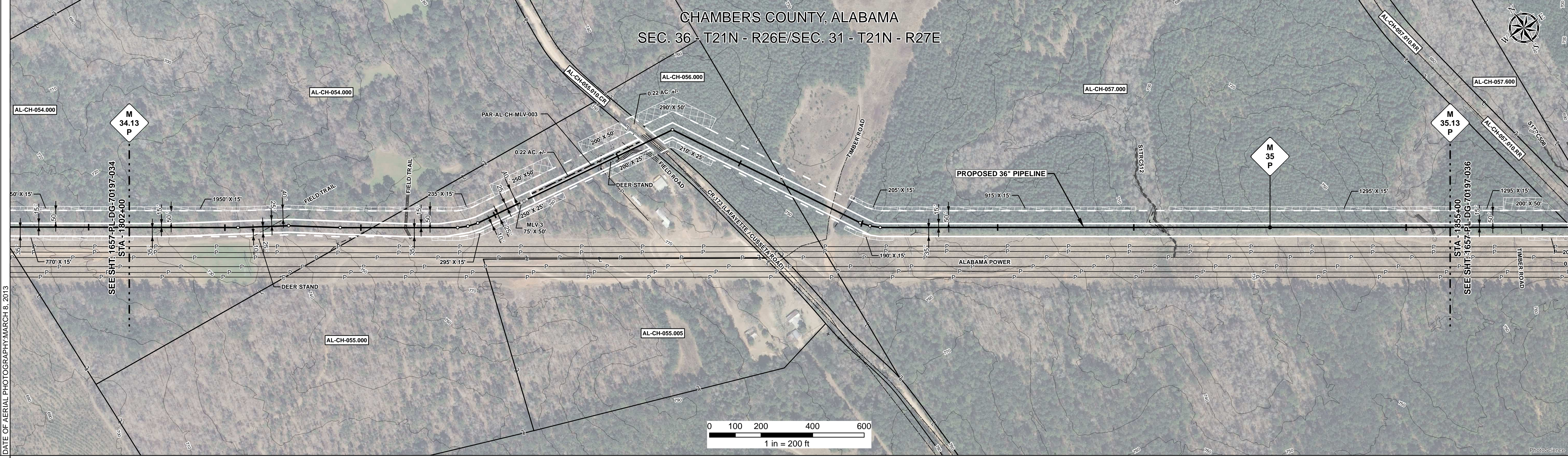
### ALIGNMENT DETAIL

PROPOSED PIPELINE  
 PROPOSED PERMANENT EASEMENT  
 TEMP WORKSPACE  
 ADD. TEMP WORKSPACE  
 EASEMENT LINE  
 CL STREAM/CREEK/DITCH  
 EDGE OF WATER  
 CL LEVEE  
 FIELD DELINEATED WETLAND  
 STREAM/DRAIN/WATERBODY BNDRY  
 CL ROAD  
 EDGE OF ROAD/PAVEMENT/CURB  
 CL CULVERT  
 CL RAILROAD  
 ACCESS ROAD (PAR/TAR)  
 STRUCTURE  
 CONTOUR MAJOR (EVERY 10')  
 PIPELINE MILEPOST  
 PIPELINE MILEPOST 10TH  
 PROPERTY LINE  
 UNDERGROUND WATERLINE  
 UNDERGROUND COM. CABLE  
 UNDERGROUND POWERLINE  
 UNDERGROUND SANITARY SEWER  
 OVERHEAD POWERLINE  
 OVERHEAD TELEPHONE  
 VERIFIED PIPELINE  
 FENCE  
 TOP / TOE

TRANS. TOWER  
 GUY ANCHOR  
 HDD ENTRY/EXIT  
 FIRE HYDRANT  
 UTILITY POLE  
 AERIAL MARKER  
 ELEC. WATER, SAN. SEWER, GAS  
 TELE. & STORM DRAIN MANHOLES

WELL  
 SEPTIC  
 VALVE  
 METER  
 SPREAD BREAK

DATE OF AERIAL PHOTOGRAPHY: MARCH 8, 2013



REFERENCE DRAWING	ENVIRONMENTAL SURVEY DATA

SENSITIVE AREAS	16, 18
-----------------	--------

### PROFILE

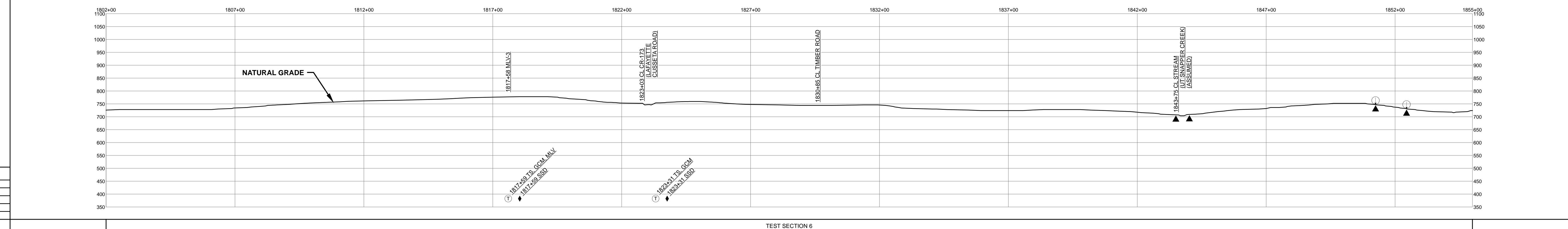
SCALE:  
 HORIZONTAL: 1" = 200'  
 VERTICAL: 1" = 200'

THE LOCATION OF TRENCH PLUGS AND SLOPE BREAKERS ARE INTENDED TO BE USED AS A GUIDELINE ONLY. EXACT LOCATION TO BE DETERMINED IN THE FIELD AS DIRECTED BY THE CHIEF INSPECTOR.

SLOPE BREAKERS/ARROW INDICATES DIRECTION

TRENCH PLUG  
 CP TEST STATION  
 RECTIFIER  
 DECOUPLER

SLOPE BREAKER & TRENCH PLUG SPACING		
CODE	% SLOPE	SPACING
A	< 5%	NO STRUCTURE
B	5 - 15%	300 FT
C	15 - 30%	200 FT
D	> 30%	100 FT



HYDROSTATIC TEST SECTION				
REFERENCE DRAWINGS	REVISIONS			
DWG. NO.	REV	DRN	DATE	DESCRIPTION
1-G-1000-MLV03	0		06/29/2015	ISSUED FOR BID
	1		03/14/2016	ISSUED FOR CONSTRUCTION

MATERIALS		TEST SECTION 6
ITEM NO.	DESCRIPTION	QTY
1	36" O.D. x 0.520" W.T., API 5L X70, FBE 16 MILS w/I.D. EPOXY 1.7 MILS	5121 LF
3	36" O.D. x 0.750" W.T., API 5L X70, FBE 16 MILS w/I.D. EPOXY 1.7 MILS	53 LF
4	36" O.D. x 0.750" W.T., API 5L X70, FBE 16 MILS, ARO 24 MILS, w/I.D. EPOXY 1.7 MILS	64 LF
MLV	MAINLINE VALVE ASSEMBLY	62 LF
3R	3R ELBOW, HIGH STRENGTH WROUGHT BUTT-WELDED FITTING, 36" O.D.	1 EA

ENGINEERING APPROVALS			
BID		CONSTRUCTION	
TITLE	SIGNATURE	DATE	DATE
DRAWN BY: GIE	FSR	06/29/2015	03/14/2016
DRN. DATE: 01/04/2016			
CHECKED BY: GIE	DRS	06/29/2015	JC
CHK. DATE:			

**SABAL TRAIL PROJECT**  
**PROPOSED 36" PIPELINE**  
**STA. 1802+00 TO STA. 1855+00**  
**ALIGNMENT SHEET**

LOC. CHAMBERS COUNTY, ALABAMA

YEAR: 2017    SHEET: 35 OF 492    SCALE: 1" = 200'    DWG. 1657-PL-DG-70197-035    REV. 1

Document Path: H:\GIS\1657\Deliverables\Alignment\Drawings\1657-PL-DG-70197-035.mxd