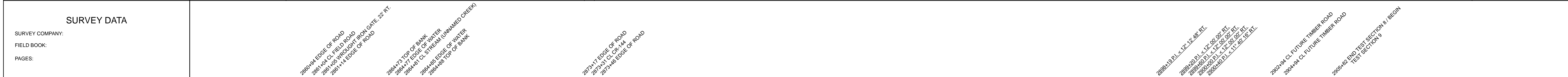
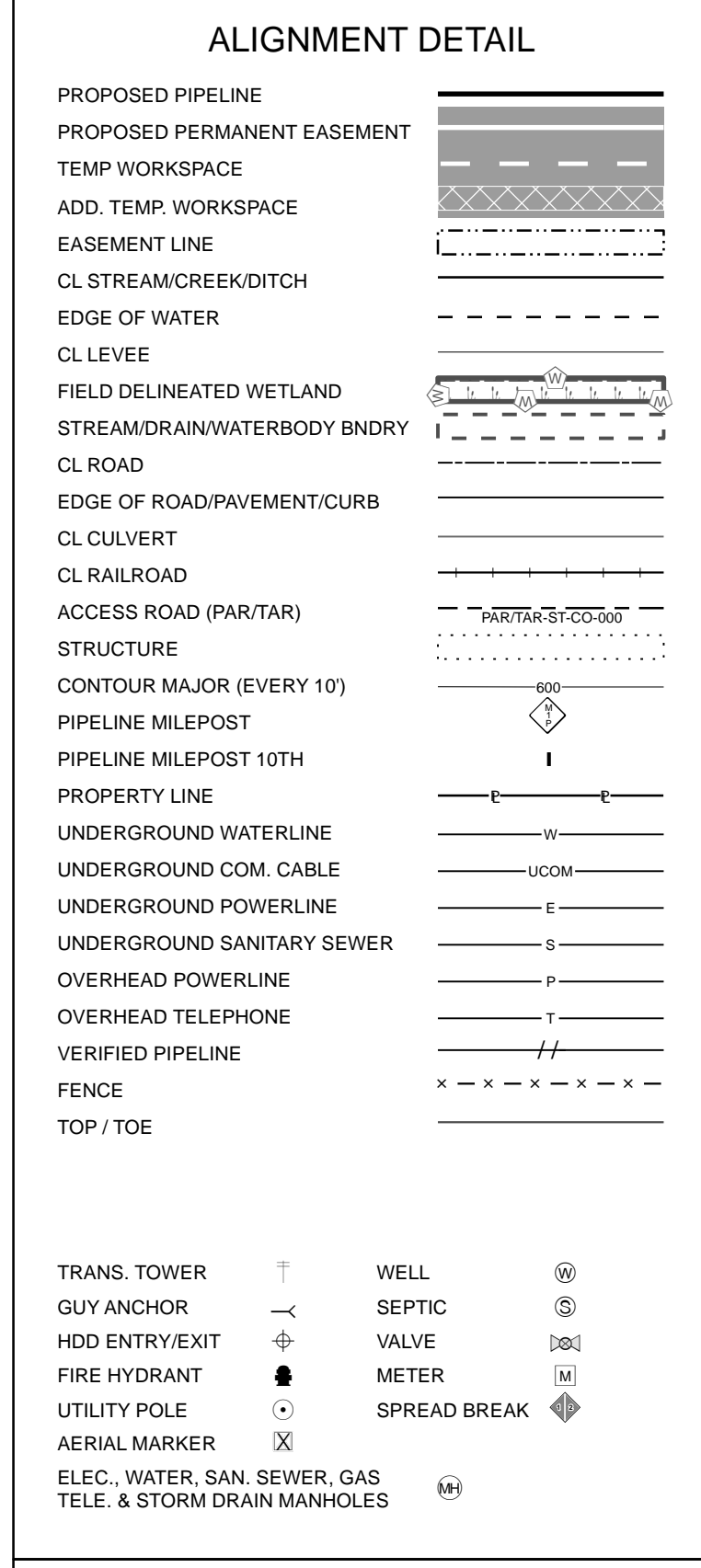


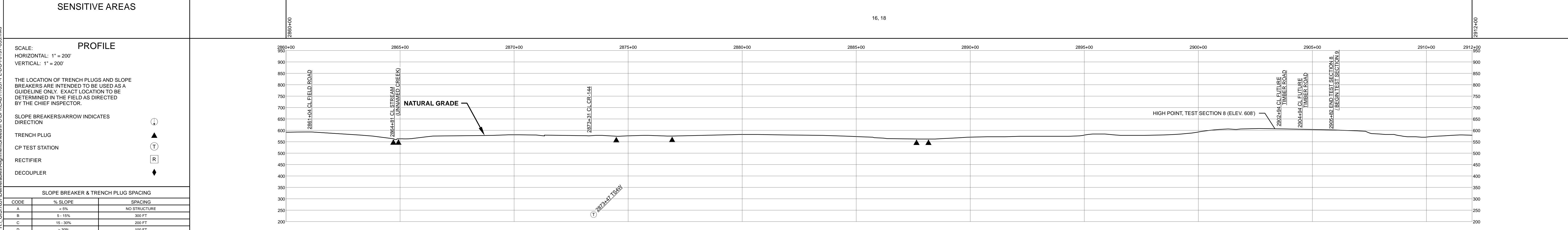
RIGHT - OF - WAY	CROSSING	2860+00	2872+00	2884+00	2896+00	2908+00	2920+00
TRACT NUMBERS		AL-LE-050.000	AL-LE-055.015.CR			AL-LE-050.000	
RODDAGE		79.3	2.7			233.2	



CLASS LOCATION	CLASS 1	2862+29	CLASS 2	2871+05	CLASS 3	2878+26	CLASS 2	2905+42	CLASS 1
MINIMUM DEPTH OF COVER						5'			
PIPE MATERIAL	189'	876'	232'	68'	501'		2716'	618'	
	1	2	3	4	3		2	1	
	2860+00	2861+89	2871+46	2872+97	2873+46	2874+66	2888+42	2889+42	2905+42
			27 GPW, 19' C-C			8 GPW, 16' C-C			



REFERENCE DRAWING	AL-LE-055.015.CR
ENVIRONMENTAL SURVEY DATA	2860+00, 2864+79, 2864+83, 2864+87, 2874+83, 2874+86, 2874+88, 2888+11, 2891+00
SENSITIVE AREAS	16, 18



HYDROSTATIC TEST SECTION		TEST SECTION 8		TEST SECTION 9				
REFERENCE DRAWINGS		REVISIONS		MATERIALS				
DWG. NO.	DESCRIPTION	REV	DRN	DATE	DESCRIPTION	ITEM NO.	DESCRIPTION	QTY
		0		06/29/2015	ISSUED FOR BID	1	36" O.D. x 0.520" W.T., API 5L X70, FBE 16 MILS w/I.D. EPOXY 1.7 MILS	807 LF
		1		03/14/2016	ISSUED FOR CONSTRUCTION	2	36" O.D. x 0.625" W.T., API 5L X70, FBE 16 MILS w/I.D. EPOXY 1.7 MILS	3592 LF
						3	36" O.D. x 0.750" W.T., API 5L X70, FBE 16 MILS w/I.D. EPOXY 1.7 MILS	733 LF
						4	36" O.D. x 0.750" W.T., API 5L X70, FBE 16 MILS, ARO 24 MILS, w/I.D. EPOXY 1.7 MILS	68 LF
						GPW	GEOTEXTILE PIPE WEIGHT, 9000 LBS	53 EA
ENGINEERING APPROVALS			SABAL TRAIL PROJECT PROPOSED 36" PIPELINE STA. 2860+00 TO STA. 2912+00 ALIGNMENT SHEET					
TITLE		SIGNATURE		DATE				
DRAWN BY: GIE		FSR		06/29/2015				
DRN DATE: 01/04/2016		FSR		03/14/2016				
CHECKED BY: GIE		DRS		06/29/2015				
CHK DATE:		JC		03/14/2016				
LOC. LEE COUNTY, ALABAMA		YEAR: 2017		SHEET: 55 OF 492				
SCALE: 1" = 200'		DWG. 1657-PL-DG-70197-055		REV. 1				

Document Path: H:\GIS\1657\Deliverables\Alignment\Sheets\IFC\SPREAD\1657-PL-DG-70197-055.mxd