

RIGHT - OF - WAY	CROSSING									
TRACT NUMBERS	GA-DO-057.000	GA-DO-058.000	GA-DO-058.001.WX	GA-DO-059.000	GA-DO-060.000					
RODDAGE	19.3	135.0	20.3	95.9	50.7					
SURVEY DATA	SURVEY COMPANY: FIELD BOOK: PAGES:									
CLASS LOCATION	CLASS 1									
MINIMUM DEPTH OF COVER	VARIES - 53"									
PIPE MATERIAL	④ - 3R, FITTING SET ON WEIGHT, GPW, GEOTEXTILE PIPE WEIGHT									

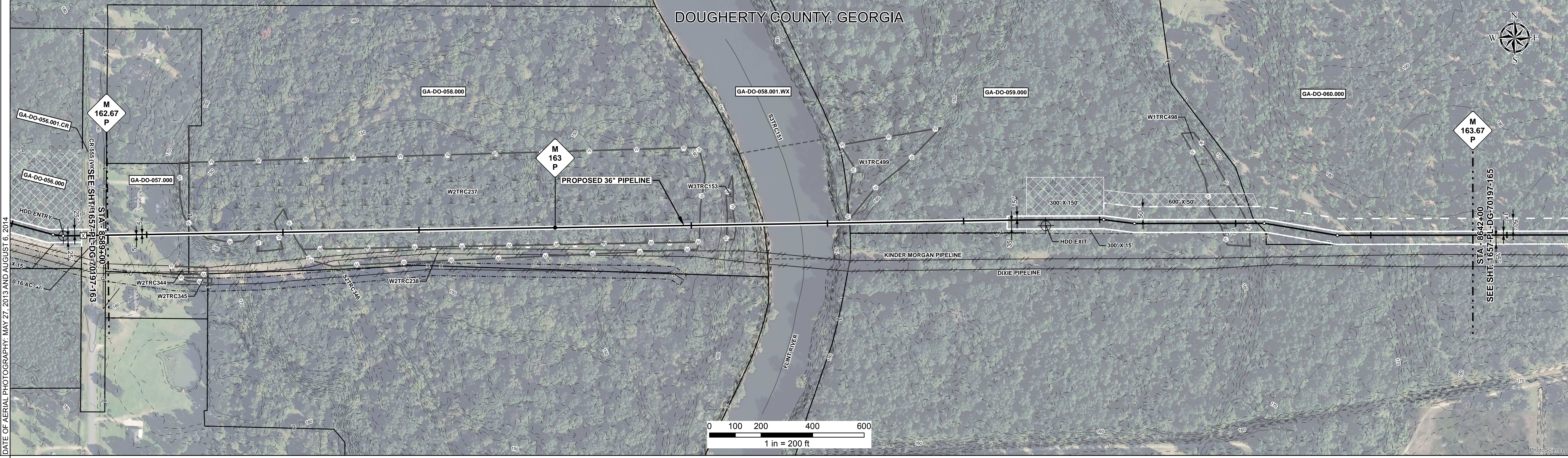
ALIGNMENT DETAIL

DATE OF AERIAL PHOTOGRAPHY: MAY 27, 2013 AND AUGUST 6, 2014

- PROPOSED PIPELINE
- PROPOSED PERMANENT EASEMENT
- TEMP WORKSPACE
- ADD. TEMP. WORKSPACE
- EASEMENT LINE
- CL STREAM/CREEK/DITCH
- EDGE OF WATER
- CL LEVEE
- FIELD DELINEATED WETLAND
- STREAM/DRAIN/WATERBODY BNDRY
- CL ROAD
- EDGE OF ROAD/PAVEMENT/CURB
- CL CULVERT
- CL RAILROAD
- ACCESS ROAD (PAR/TAR)
- STRUCTURE
- CONTOUR MAJOR (EVERY 10')
- CONTOUR MINOR (EVERY 2')
- PIPELINE MILEPOST
- PIPELINE MILEPOST 10TH
- PROPERTY LINE
- UNDERGROUND WATERLINE
- UNDERGROUND COM. CABLE
- UNDERGROUND POWERLINE
- UNDERGROUND SANITARY SEWER
- OVERHEAD POWERLINE
- OVERHEAD TELEPHONE
- VERIFIED PIPELINE
- FENCE
- TOP / TOE

TRANS. TOWER
GUY ANCHOR
HDD ENTRY/EXIT
FIRE HYDRANT
UTILITY POLE
AERIAL MARKER
ELEC. WATER, SAN. SEWER, GAS
TELE. & STORM DRAIN MANHOLES

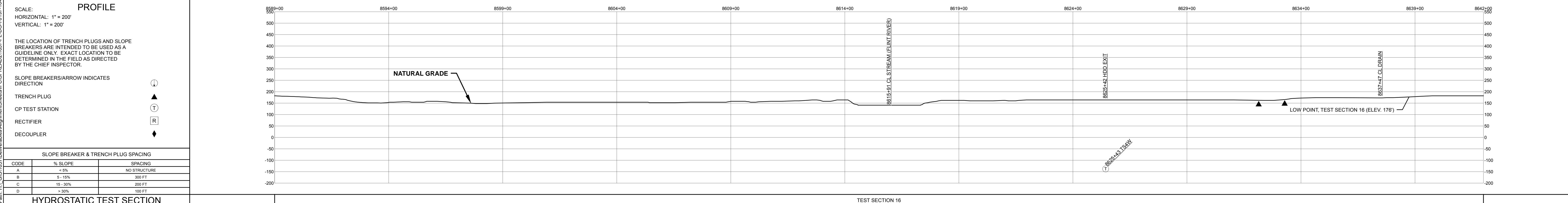
WELL
SEPTIC
VALVE
METER
SPREAD BREAK



REFERENCE DRAWING

FLINT RIVER HDD - 1657-PL-DG-45106

ENVIRONMENTAL SURVEY DATA	8589+00	8592+03	W2TRC237 PFO	W2TRC237 PFO	8604+00	8609+00	8614+00	8619+00	8624+00	8629+00	8634+00	8639+00	8642+00
SENSITIVE AREAS	8589+00	6a, 6b, 18	18	6a, 6b, 18	18	6a, 6b, 18	1b	6a, 6b	6a, 6b, 18	18	6a, 6b, 18	6a, 6b, 18	8642+00



HYDROSTATIC TEST SECTION

REF. DRAWING	REVISIONS	MATERIALS	ENGINEERING APPROVALS										
DWG. NO.	DESCRIPTION	REV	DRN	DATE	DESCRIPTION	ITEM NO.	DESCRIPTION	QTY	TITLE	SIGNATURE	DATE	SIGNATURE	DATE
		0		06/29/2015	ISSUED FOR BID	1	36" O.D. x 0.520" W.T., API 5L X70, FBE 16 MILS w/I.D. EPOXY 1.7 MILS	339 LF	SABAL TRAIL PROJECT PROPOSED 36" PIPELINE STA. 8589+00 TO STA. 8642+00 ALIGNMENT SHEET		LOC. DOUGHERTY COUNTY, GEORGIA YEAR: 2017 SHEET: 164 OF 492 SCALE: 1" = 200' DWG. 1657-PL-DG-70197-164 REV. 1		
		1		03/14/2016	ISSUED FOR CONSTRUCTION	2	36" O.D. x 0.625" W.T., API 5L X70, FBE 16 MILS w/I.D. EPOXY 1.7 MILS	1319 LF					
						4	36" O.D. x 0.750" W.T., API 5L X70, FBE 16 MILS, ARO 24 MILS, w/I.D. EPOXY 1.7 MILS	3642 LF					
						GPW	GEOTEXTILE PIPE WEIGHT, 9000 LBS	13 EA					