

|  |  |          |  |               |  |                  |  |               |  |                  |  |               |  |         |  |
|--|--|----------|--|---------------|--|------------------|--|---------------|--|------------------|--|---------------|--|---------|--|
| RIGHT - OF - WAY                           |  | CROSSING |  | GA-DO-060.000 |  | GA-DO-060.001.CR |  | GA-DO-060.005 |  | GA-DO-060.006.RR |  | GA-DO-060.010 |  | 8686+00 |  |
| TRACT NUMBERS                              |  |          |  | 203.5         |  | 3.7              |  | 6.9           |  | 15.2             |  | 37.5          |  |         |  |
| RODDAGE                                    |  |          |  |               |  |                  |  |               |  |                  |  |               |  |         |  |
| SURVEY DATA                                |  |          |  |               |  |                  |  |               |  |                  |  |               |  |         |  |
| SURVEY COMPANY:                            |  |          |  |               |  |                  |  |               |  |                  |  |               |  |         |  |
| FIELD BOOK:                                |  |          |  |               |  |                  |  |               |  |                  |  |               |  |         |  |
| PAGES:                                     |  |          |  |               |  |                  |  |               |  |                  |  |               |  |         |  |
| CLASS LOCATION                             |  |          |  | CLASS 1       |  |                  |  |               |  |                  |  |               |  |         |  |
| MINIMUM DEPTH OF COVER                     |  |          |  | 3'            |  |                  |  |               |  |                  |  |               |  |         |  |
| PIPE MATERIAL                              |  |          |  | ①             |  |                  |  |               |  |                  |  |               |  |         |  |
| - 3R, FITTING                              |  |          |  |               |  |                  |  |               |  |                  |  |               |  |         |  |
| SET ON WEIGHT, GPM, GEOTEXTILE PIPE WEIGHT |  |          |  |               |  |                  |  |               |  |                  |  |               |  |         |  |

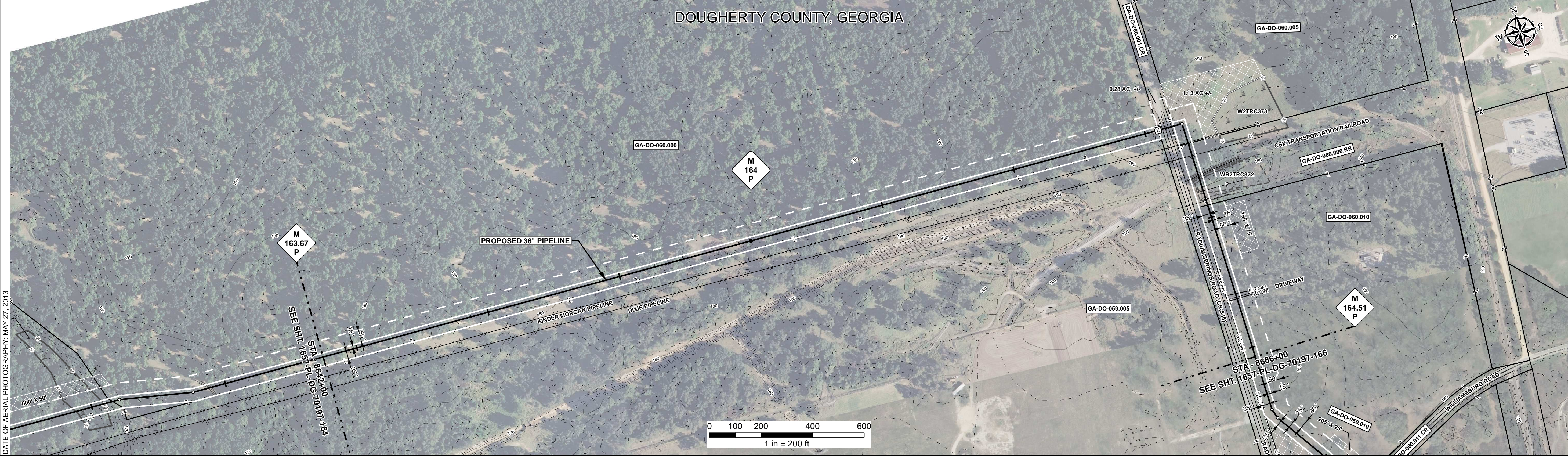
**ALIGNMENT DETAIL**

PROPOSED PIPELINE  
 PROPOSED PERMANENT EASEMENT  
 TEMP WORKSPACE  
 ADD. TEMP. WORKSPACE  
 EASEMENT LINE  
 CL STREAM/CREEK/DITCH  
 EDGE OF WATER  
 CL LEVEE  
 FIELD DELINEATED WETLAND  
 STREAM/DRAIN/WATERBODY BNDRY  
 CL ROAD  
 EDGE OF ROAD/PAVEMENT/CURB  
 CL CULVERT  
 CL RAILROAD  
 ACCESS ROAD (PAR/TAR)  
 STRUCTURE  
 CONTOUR MAJOR (EVERY 10')  
 CONTOUR MINOR (EVERY 2')  
 PIPELINE MILEPOST  
 PIPELINE MILEPOST 10TH  
 PROPERTY LINE  
 UNDERGROUND WATERLINE  
 UNDERGROUND COM. CABLE  
 UNDERGROUND POWERLINE  
 UNDERGROUND SANITARY SEWER  
 OVERHEAD POWERLINE  
 OVERHEAD TELEPHONE  
 VERIFIED PIPELINE  
 FENCE  
 TOP / TOE

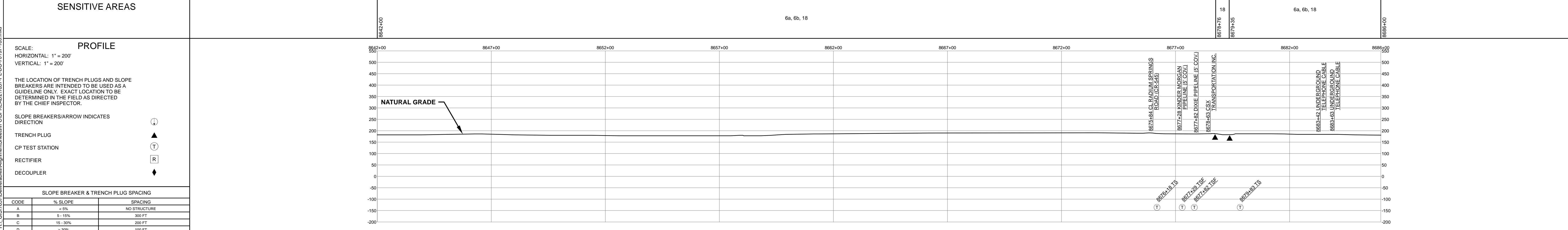
DATE OF AERIAL PHOTOGRAPHY: MAY 27, 2013

TRANS. TOWER  
 GUY ANCHOR  
 HDD ENTRY/EXIT  
 FIRE HYDRANT  
 UTILITY POLE  
 AERIAL MARKER  
 ELEC. WATER, SAN. SEWER, GAS  
 TELE. & STORM DRAIN MANHOLES

WELL  
 SEPTIC  
 VALVE  
 METER  
 SPREAD BREAK



|                           |                  |                  |
|---------------------------|------------------|------------------|
| REFERENCE DRAWING         | GA-DO-060.001.CR | 1657-PL-DG-28160 |
| ENVIRONMENTAL SURVEY DATA |                  |                  |
| SENSITIVE AREAS           | 6a, 6b, 18       | 6a, 6b, 18       |



|                          |             |           |     |            |                         |                       |   |   |       |            |            |                           |      |            |           |                      |      |
|--------------------------|-------------|-----------|-----|------------|-------------------------|-----------------------|---|---|-------|------------|------------|---------------------------|------|------------|-----------|----------------------|------|
| HYDROSTATIC TEST SECTION |             | REVISIONS |     | MATERIALS  |                         | ENGINEERING APPROVALS |   | SABAL TRAIL PROJECT<br>PROPOSED 36" PIPELINE<br>STA. 8642+00 TO STA. 8686+00<br>ALIGNMENT SHEET |       |            |            |                           |      |            |           |                      |      |
| DWG. NO.                 | DESCRIPTION | REV       | DRN | DATE       | DESCRIPTION             | ITEM NO.              | DESCRIPTION   | QTY   | TITLE | SIGNATURE  | DATE       | LOC.                      | YEAR | SHEET      | SCALE     | DWG.                 | REV. |
|                          |             | 0         |     | 06/29/2015 | ISSUED FOR BID          | 1                     | 36" O.D. x 0.520" W.T., API 5L X70, FBE 16 MILS w/I.D. EPOXY 1.7 MILS               | 3723 LF   | FRS   | 06/29/2015 | 03/14/2016 | DOUGHERTY COUNTY, GEORGIA | 2017 | 165 OF 492 | 1" = 200' | 1657-PL-DG-70197-165 | 1    |
|                          |             | 1         |     | 03/14/2016 | ISSUED FOR CONSTRUCTION | 2                     | 36" O.D. x 0.625" W.T., API 5L X70, FBE 16 MILS w/I.D. EPOXY 1.7 MILS               | 232 LF  |       |            |            |                           |      |            |           |                      |      |
|                          |             |           |     |            |                         | 4                     | 36" O.D. x 0.750" W.T., API 5L X70, FBE 16 MILS, ARO 24 MILS, w/I.D. EPOXY 1.7 MILS | 445 LF  |       |            |            |                           |      |            |           |                      |      |
|                          |             |           |     |            |                         | 3R                    | 3R ELBOW, HIGH STRENGTH WROUGHT BUTT-WELD FITTING, 36" O.D.                         | 1 EA  |       |            |            |                           |      |            |           |                      |      |

Document Path: H:\GIS\1657\Deliverables\Alignment\Sheet\1657-PL-DG-70197-165.mxd