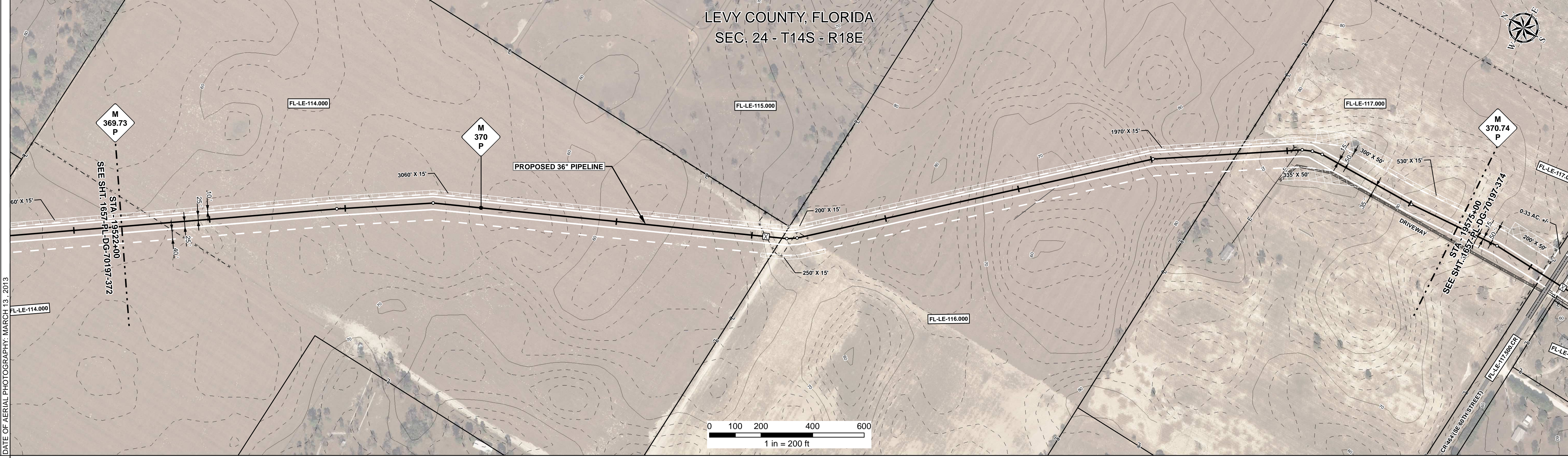


| | | | | | | | | | |
|------------------------|--|--|--|--|--|--|--|--|-------------|
| RIGHT - OF - WAY | | | | | | | | | |
| TRACT NUMBERS | | | | | | | | | |
| RODDAGE | | | | | | | | | |
| SURVEY DATA | SURVEY COMPANY: FIELD BOOK: PAGES: | | | | | | | | |
| CLASS LOCATION | CLASS 1 | | | | | | | | CLASS 2 |
| MINIMUM DEPTH OF COVER | 4' | | | | | | | | 23' |
| PIPE MATERIAL | 36" FITTING | | | | | | | | 36" FITTING |
| | SET ON WEIGHT, GPW, GEOTEXTILE PIPE WEIGHT | | | | | | | | |

ALIGNMENT DETAIL

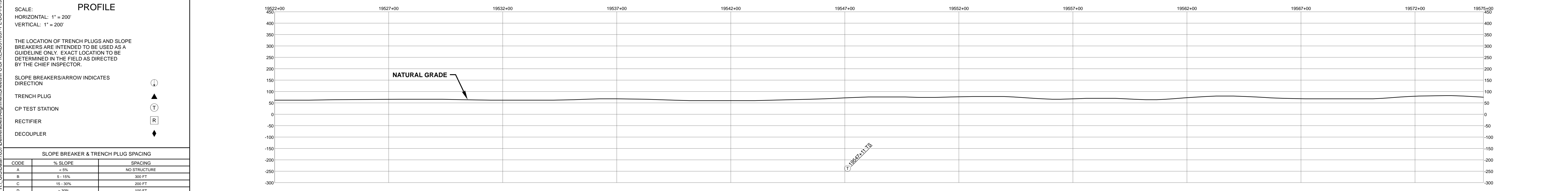
PROPOSED PIPELINE
 PROPOSED PERMANENT EASEMENT
 TEMP WORKSPACE
 ADD. TEMP. WORKSPACE
 EASEMENT LINE
 CL STREAM/CREEK/DITCH
 EDGE OF WATER
 CL LEVEE
 FIELD DELINEATED WETLAND
 STREAM/DRAIN/WATERBODY BNDRY
 CL ROAD
 EDGE OF ROAD/PAVEMENT/CURB
 CL CULVERT
 CL RAILROAD
 ACCESS ROAD (PAR/TAR)
 STRUCTURE
 CONTOUR MAJOR (EVERY 10')
 CONTOUR MINOR (EVERY 2')
 PIPELINE MILEPOST
 PIPELINE MILEPOST 10TH
 PROPERTY LINE
 UNDERGROUND WATERLINE
 UNDERGROUND COM. CABLE
 UNDERGROUND POWERLINE
 UNDERGROUND SANITARY SEWER
 OVERHEAD POWERLINE
 OVERHEAD TELEPHONE
 VERIFIED PIPELINE
 FENCE
 TOP / TOE

DATE OF AERIAL PHOTOGRAPHY: MARCH 13, 2013



| | | | | | | | | | |
|---------------------------|--|--|--|--|--|--|--|--|--|
| REFERENCE DRAWING | | | | | | | | | |
| ENVIRONMENTAL SURVEY DATA | | | | | | | | | |

| | | | | | | |
|-----------------|-------------------|-----------------------|-------------------|-----------------------|-----------------------|-------------------|
| SENSITIVE AREAS | 6a, 6b, 8, 16, 18 | 6a, 6b, 8, 10, 16, 18 | 6a, 6b, 8, 16, 18 | 6a, 6b, 8, 10, 16, 18 | 6a, 6b, 8, 11, 16, 18 | 6a, 6b, 8, 16, 18 |
|-----------------|-------------------|-----------------------|-------------------|-----------------------|-----------------------|-------------------|



| | | | | | | | | | | | | |
|--------------------------|-------------|--------------------|-----|------------|-------------------------|-----------|---|-----------------------|------------|---|------------|---|
| HYDROSTATIC TEST SECTION | | REFERENCE DRAWINGS | | REVISIONS | | MATERIALS | | ENGINEERING APPROVALS | | SABAL TRAIL PROJECT PROPOSED 36" PIPELINE STA. 19522+00 TO STA. 19575+00 ALIGNMENT SHEET | | |
| DWG. NO. | DESCRIPTION | REV | DRN | DATE | DESCRIPTION | ITEM NO. | DESCRIPTION | QTY | TITLE | SIGNATURE | DATE | |
| | | 0 | | 06/29/2015 | ISSUED FOR BID | 1 | 36" O.D. x 0.520" W.T., API 5L X70, FBE 16 MILS w/I.D. EPOXY 1.7 MILS | 5063 LF | FRS | 06/29/2015 | 03/14/2016 | LEVY COUNTY, FLORIDA |
| | | 1 | | 03/14/2016 | ISSUED FOR CONSTRUCTION | 2 | 36" O.D. x 0.625" W.T., API 5L X70, FBE 16 MILS w/I.D. EPOXY 1.7 MILS | 237 LF | DRS | 06/29/2015 | 03/14/2016 | YEAR: 2017 SHEET: 373 OF 492 SCALE: 1" = 200' |
| | | | | | | | | | CHK. DATE: | | | DWG. 1657-PL-DG-70197-373 REV. 1 |

Document Path: H:\GIS\Draw\1657\Deliverables\Alignment\Sheet\1657-PL-DG-70197-373.mxd
 1657-PL-DG-70197-373.mxd