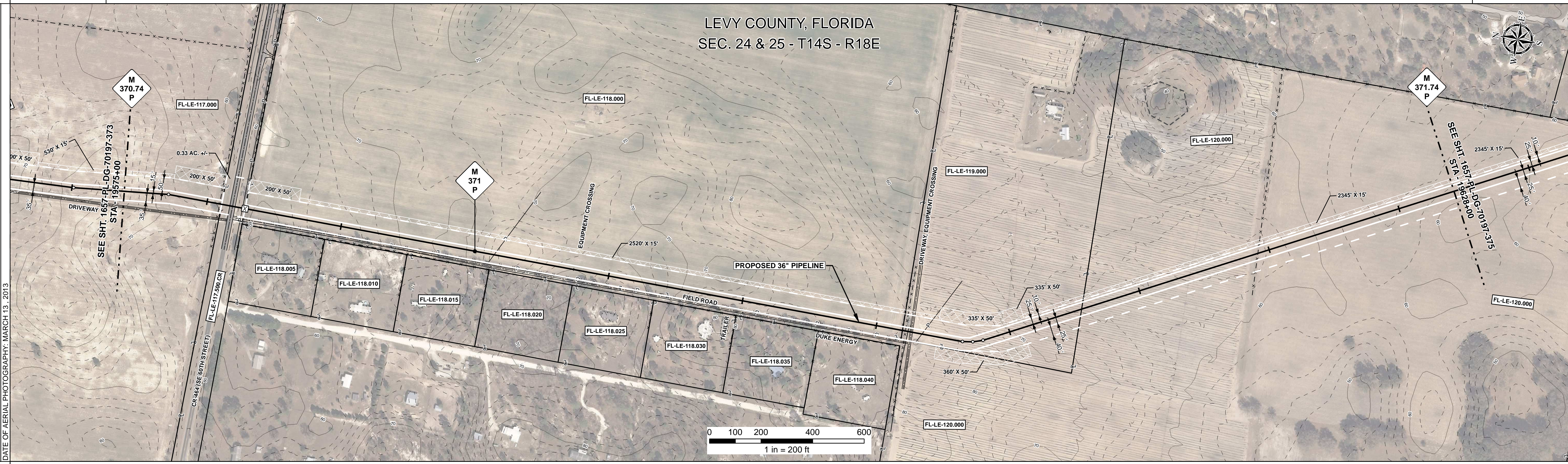


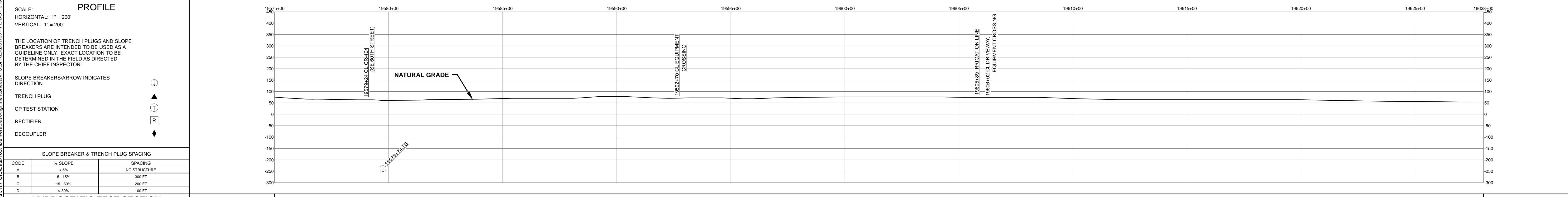
RIGHT - OF - WAY	CROSSING													
TRACT NUMBERS	FL-LE-117.000		FL-LE-117.500.CR		FL-LE-118.000			FL-LE-119.000		FL-LE-120.000				
RODDAGE	23.1		5.8		157.0			43.5		91.8				
SURVEY DATA	SURVEY COMPANY: FIELD BOOK: PAGES: 19579+00 19579+01 19579+02 19579+03 19579+04 19579+05 19579+06 19579+07 19579+08 19579+09 19579+10 19579+11 19579+12 19579+13 19579+14 19579+15 19579+16 19579+17 19579+18 19579+19 19579+20 19579+21 19579+22 19579+23 19579+24 19579+25 19579+26 19579+27 19579+28 19579+29 19579+30 19579+31 19579+32 19579+33 19579+34 19579+35 19579+36 19579+37 19579+38 19579+39 19579+40 19579+41 19579+42 19579+43 19579+44 19579+45 19579+46 19579+47 19579+48 19579+49 19579+50 19579+51 19579+52 19579+53 19579+54 19579+55 19579+56 19579+57 19579+58 19579+59 19579+60 19579+61 19579+62 19579+63 19579+64 19579+65 19579+66 19579+67 19579+68 19579+69 19579+70 19579+71 19579+72 19579+73 19579+74 19579+75 19579+76 19579+77 19579+78 19579+79 19579+80 19579+81 19579+82 19579+83 19579+84 19579+85 19579+86 19579+87 19579+88 19579+89 19579+90 19579+91 19579+92 19579+93 19579+94 19579+95 19579+96 19579+97 19579+98 19579+99 19600+00 19600+01 19600+02 19600+03 19600+04 19600+05 19600+06 19600+07 19600+08 19600+09 19600+10 19600+11 19600+12 19600+13 19600+14 19600+15 19600+16 19600+17 19600+18 19600+19 19600+20 19600+21 19600+22 19600+23 19600+24 19600+25 19600+26 19600+27 19600+28 19600+29 19600+30 19600+31 19600+32 19600+33 19600+34 19600+35 19600+36 19600+37 19600+38 19600+39 19600+40 19600+41 19600+42 19600+43 19600+44 19600+45 19600+46 19600+47 19600+48 19600+49 19600+50 19600+51 19600+52 19600+53 19600+54 19600+55 19600+56 19600+57 19600+58 19600+59 19600+60 19600+61 19600+62 19600+63 19600+64 19600+65 19600+66 19600+67 19600+68 19600+69 19600+70 19600+71 19600+72 19600+73 19600+74 19600+75 19600+76 19600+77 19600+78 19600+79 19600+80 19600+81 19600+82 19600+83 19600+84 19600+85 19600+86 19600+87 19600+88 19600+89 19600+90 19600+91 19600+92 19600+93 19600+94 19600+95 19600+96 19600+97 19600+98 19600+99 19628+00 19628+01 19628+02 19628+03 19628+04 19628+05 19628+06 19628+07 19628+08 19628+09 19628+10 19628+11 19628+12 19628+13 19628+14 19628+15 19628+16 19628+17 19628+18 19628+19 19628+20 19628+21 19628+22 19628+23 19628+24 19628+25 19628+26 19628+27 19628+28 19628+29 19628+30 19628+31 19628+32 19628+33 19628+34 19628+35 19628+36 19628+37 19628+38 19628+39 19628+40 19628+41 19628+42 19628+43 19628+44 19628+45 19628+46 19628+47 19628+48 19628+49 19628+50													
CLASS LOCATION	CLASS 2										19611+64	CLASS 1	19624+25	CLASS 2
MINIMUM DEPTH OF COVER	4'		5'		4'			5'		4'		5'		
PIPE MATERIAL	36" ②		4" ④		4" ④			4821' ②		4" ④		4" ④		
ALIGNMENT DETAIL	PROPOSED PIPELINE PROPOSED PERMANENT EASEMENT TEMP WORKSPACE ADD. TEMP WORKSPACE EASEMENT LINE CL STREAM/CREEK/DITCH EDGE OF WATER CL LEVEE FIELD DELINEATED WETLAND STREAM/DRAIN/WATERBODY BNDRY CL ROAD EDGE OF ROAD/PAVEMENT/CURB CL CULVERT CL RAILROAD ACCESS ROAD (PAR/TAR) STRUCTURE CONTOUR MAJOR (EVERY 10') CONTOUR MINOR (EVERY 2') PIPELINE MILEPOST PIPELINE MILEPOST 10TH PROPERTY LINE UNDERGROUND WATERLINE UNDERGROUND COM. CABLE UNDERGROUND POWERLINE UNDERGROUND SANITARY SEWER OVERHEAD POWERLINE OVERHEAD TELEPHONE VERIFIED PIPELINE FENCE TOP / TOE TRANS. TOWER GUY ANCHOR HDD ENTRY/EXIT FIRE HYDRANT UTILITY POLE AERIAL MARKER ELEC. WATER, SAN. SEWER, GAS TELE. & STORM DRAIN MANHOLES WELL SEPTIC VALVE METER SPREAD BREAK DATE OF AERIAL PHOTOGRAPHY: MARCH 13, 2013													



REFERENCE DRAWING	FL-LE-117.500.CR									
-------------------	------------------	--	--	--	--	--	--	--	--	--

ENVIRONMENTAL SURVEY DATA										
---------------------------	--	--	--	--	--	--	--	--	--	--

SENSITIVE AREAS	6a, 6b, 8, 16, 18									
-----------------	-------------------	--	--	--	--	--	--	--	--	--



HYDROSTATIC TEST SECTION				REVISIONS				MATERIALS				ENGINEERING APPROVALS				SABAL TRAIL PROJECT PROPOSED 36" PIPELINE STA. 19575+00 TO STA. 19628+00 ALIGNMENT SHEET			
DWG. NO.	DESCRIPTION			REV	DRN	DATE	DESCRIPTION	ITEM NO.	DESCRIPTION			QTY	TITLE		SIGNATURE		DATE		LOC. LEVY COUNTY, FLORIDA YEAR: 2017 SHEET: 374 OF 492 SCALE: 1" = 200' DWG. 1657-PL-DG-70197-374 REV. 1
				0		06/29/2015	ISSUED FOR BID	2	36" O.D. x 0.625" W.T., API 5L X70, FBE 16 MILS w/I.D. EPOXY 1.7 MILS			5190 LF	FSR		06/29/2015				
				1		03/14/2016	ISSUED FOR CONSTRUCTION	4	36" O.D. x 0.750" W.T., API 5L X70, FBE 16 MILS, ARO 24 MILS, w/I.D. EPOXY 1.7 MILS			110 LF	DRS		06/29/2015				
													JC		03/14/2016				