

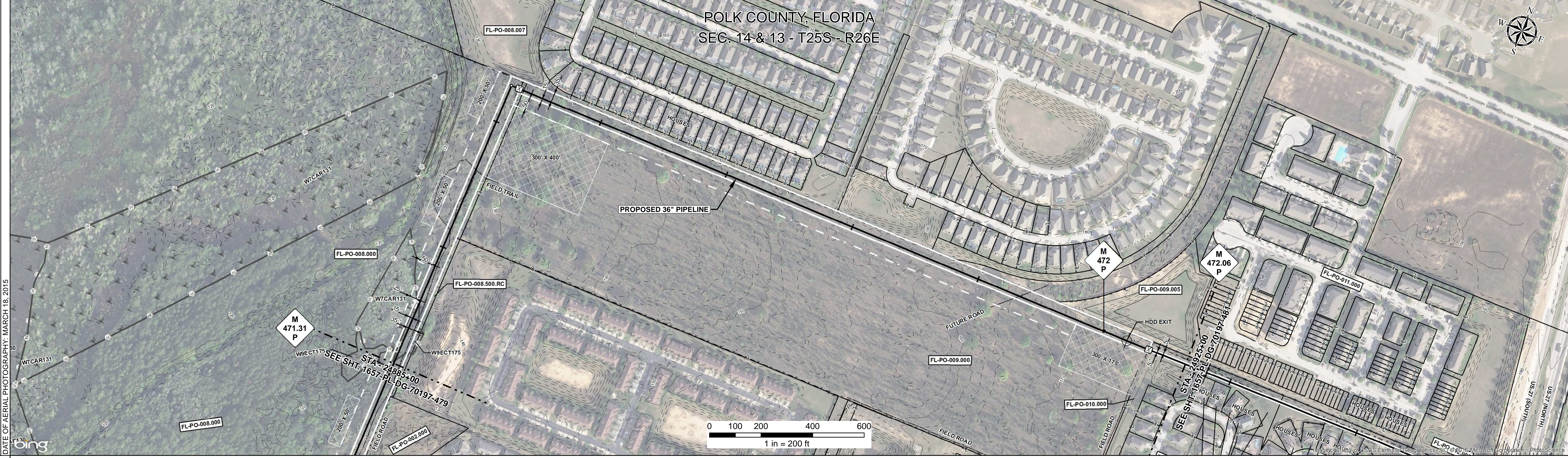
|                        |   |  |  |  |  |  |  |  |  |
|------------------------|---|--|--|--|--|--|--|--|--|
| RIGHT - OF - WAY       |   |  |  |  |  |  |  |  |  |
| TRACT NUMBERS          |   |  |  |  |  |  |  |  |  |
| RODDAGE                |   |  |  |  |  |  |  |  |  |
| SURVEY DATA            | SURVEY COMPANY:<br>FIELD BOOK:<br>PAGES:                                    |  |  |  |  |  |  |  |  |
| CLASS LOCATION         | CLASS 3   |  |  |  |  |  |  |  |  |
| MINIMUM DEPTH OF COVER |   |  |  |  |  |  |  |  |  |
| PIPE MATERIAL          | 15 GPW, 19" C-C<br>3R FITTING<br>SET ON WEIGHT, GPW, GEOTEXTILE PIPE WEIGHT |  |  |  |  |  |  |  |  |

**ALIGNMENT DETAIL**

DATE OF AERIAL PHOTOGRAPHY: MARCH 18, 2015

- PROPOSED PIPELINE
- PROPOSED PERMANENT EASEMENT
- TEMP WORKSPACE
- ADD. TEMP. WORKSPACE
- EASEMENT LINE
- CL STREAM/CREEK/DITCH
- EDGE OF WATER
- CL LEVEE
- FIELD DELINEATED WETLAND
- STREAM/DRAIN/WATERBODY BNDRY
- CL ROAD
- EDGE OF ROAD/PAVEMENT/CURB
- CL CULVERT
- CL RAILROAD
- ACCESS ROAD (PAR/TAR)
- STRUCTURE
- CONTOUR MAJOR (EVERY 10')
- CONTOUR MINOR (EVERY 2')
- PIPELINE MILEPOST
- PIPELINE MILEPOST 10TH
- PROPERTY LINE
- UNDERGROUND WATERLINE
- UNDERGROUND COM. CABLE
- UNDERGROUND POWERLINE
- UNDERGROUND SANITARY SEWER
- OVERHEAD POWERLINE
- OVERHEAD TELEPHONE
- VERIFIED PIPELINE
- FENCE
- TOP / TOE

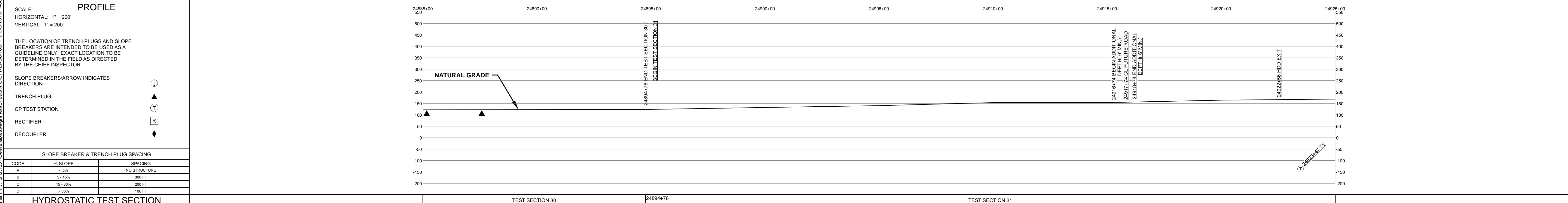
- TRANS. TOWER
- GUY ANCHOR
- HDD ENTRY/EXIT
- FIRE HYDRANT
- UTILITY POLE
- AERIAL MARKER
- ELEC. WATER, SAN. SEWER, GAS
- TELE. & STORM DRAIN MANHOLES
- WELL
- SEPTIC
- VALVE
- METER
- SPREAD BREAK



|                   |                  |                  |                                    |
|-------------------|------------------|------------------|------------------------------------|
| REFERENCE DRAWING | 1657-PL-DG-34521 | 1657-PL-DG-32494 | US HIGHWAY 27 HDD-1657-PL-DG-45111 |
|-------------------|------------------|------------------|------------------------------------|

|                           |  |  |  |  |  |  |  |  |  |
|---------------------------|--|--|--|--|--|--|--|--|--|
| ENVIRONMENTAL SURVEY DATA |  |  |  |  |  |  |  |  |  |
|---------------------------|--|--|--|--|--|--|--|--|--|

|                 |  |  |  |  |  |  |  |  |  |
|-----------------|--|--|--|--|--|--|--|--|--|
| SENSITIVE AREAS |  |  |  |  |  |  |  |  |  |
|-----------------|--|--|--|--|--|--|--|--|--|



|                           |             |                                |     |                       |   |
|---------------------------|-------------|--------------------------------|-----|-----------------------|---|
| HYDROSTATIC TEST SECTION  |             | TEST SECTION 30                |     | TEST SECTION 31       |   |
| REFERENCE DRAWINGS        |             | REVISIONS                      |     | MATERIALS             |   |
| DWG. NO.                  | DESCRIPTION | REV                            | DRN | DATE                  | DESCRIPTION   |
|                           |             | 0                              |     | 06/29/2015            | ISSUED FOR BID  |
|                           |             | 1                              |     | 03/14/2016            | ISSUED FOR CONSTRUCTION   |
|                           |             |                                |     |                       | ITEM NO.  |
|                           |             |                                |     |                       | DESCRIPTION   |
|                           |             |                                |     |                       | QTY   |
|                           |             |                                |     |                       | 3   |
|                           |             |                                |     |                       | 36" O.D. x 0.750" W.T., API 5L X70, FBE 16 MILS w/I.D. EPOXY 1.7 MILS |
|                           |             |                                |     |                       | 244 LF  |
|                           |             |                                |     |                       | 3R  |
|                           |             |                                |     |                       | 3R ELBOW, HIGH STRENGTH WROUGHT BUTT-WELDED FITTING, 36" O.D.         |
|                           |             |                                |     |                       | 1 EA  |
|                           |             |                                |     |                       | GPW   |
|                           |             |                                |     |                       | GEOTEXTILE PIPE WEIGHT, 8000 LBS                                      |
|                           |             |                                |     |                       | 15 EA   |
| ENGINEERING APPROVALS     |             | SABAL TRAIL PROJECT            |     | PROPOSED 36" PIPELINE |   |
|                           |             | STA. 24885+00 TO STA. 24925+00 |     | ALIGNMENT SHEET       |   |
| TITLE                     |             | SIGNATURE                      |     | DATE                  |   |
| DRAWN BY: GIE             |             | FSR                            |     | 06/29/2015            |   |
| DRN DATE: 01/04/2016      |             | FSR                            |     | 03/14/2016            |   |
| CHECKED BY: GIE           |             | DRS                            |     | 06/29/2015            |   |
| CHK. DATE:                |             | JC                             |     | 03/14/2016            |   |
| LOC. POLK COUNTY, FLORIDA |             | YEAR: 2017                     |     | SHEET: 480 OF 492     |   |
| SCALE: 1" = 200'          |             | DWG. 1657-PL-DG-70197-480      |     | REV. 1                |   |

Document Path: H:\GIS\1657\Deliverables\Alignment\Sheets\1657-PL-DG-70197-480.mxd