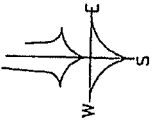


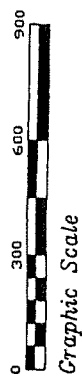
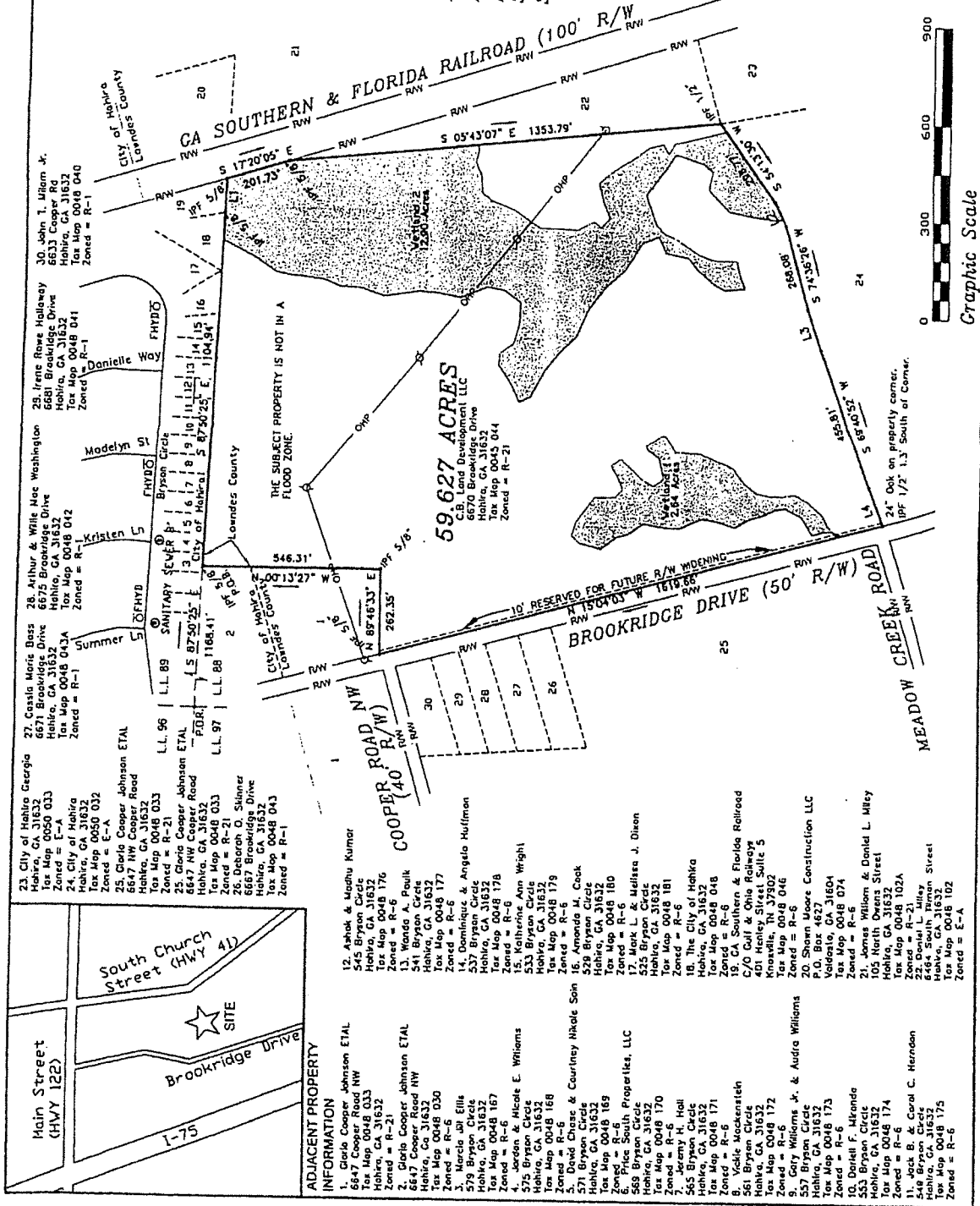
SURVEY DATA
 Error of closure (plot): 1 in 50,000+
 Error of closure (field): 1 in (open traverse)
 Field work started on: 09-18-2019
 Field work completed on: 09-24-2019
 Angular error: 1" per angle point
 Adjusted by: NA
 Equip. used: Topcon Power Station (37)

LINE	BEARING	DISTANCE
L1	S 87°45'58" E	106.04
L2	S 64°41'32" W	79.18
L3	S 71°19'13" W	133.55
L4	S 69°01'28" W	176.25



Resuming Map for:
C.B LAND DEVELOPMENT LLC
 Land Lot # 88, 12th L.D.,
 Lowndes County, Georgia.
 Scale: 1" = 300'
 September 24, 2019

Carter Surveying, L.L.C.
 246 McCrea Road
 Willacochee, Georgia 31650
 Est. 1981
 Tax Map / parcel(s) [Flat 1 0122-05 REZONE
 0045 / 044
 PH: 912.634.5066 email gmcarter@csll.com



South Church Street (HWY 41)
 Brookridge Drive
 1-75
 Main Street (HWY 122)
 ☆ SITE

ADJACENT PROPERTY INFORMATION

- 1. Gloria Cooper Johnson ETAL, 545 Bryson Circle, Hahira, GA 31632, Tax Map 0048 043, Zoned = R-6
- 2. Gloria Cooper Johnson ETAL, 6647 Cooper Road NW, Hahira, Ga, 31632, Tax Map 0048 030, Zoned = R-6
- 3. Marcella J. Ellis, 579 Bryson Circle, Hahira, GA 31632, Tax Map 0048 167, Zoned = R-6
- 4. Jordan & Michele E. Williams, 575 Bryson Circle, Hahira, GA 31632, Tax Map 0048 168, Zoned = R-6
- 5. L. D. Williams, 571 Bryson Circle, Hahira, GA 31632, Tax Map 0048 169, Zoned = R-6
- 6. L. D. Williams, 569 Bryson Circle, Hahira, GA 31632, Tax Map 0048 170, Zoned = R-6
- 7. Hall, 565 Bryson Circle, Hahira, GA 31632, Tax Map 0048 171, Zoned = R-6
- 8. Vacke Mackenstien, 561 Bryson Circle, Hahira, GA 31632, Tax Map 0048 172, Zoned = R-6
- 9. Gary Williams, Jr. & Audra Williams, 557 Bryson Circle, Hahira, GA 31632, Tax Map 0048 173, Zoned = R-6
- 10. Daniel F. Mikanda, 553 Bryson Circle, Hahira, GA 31632, Tax Map 0048 174, Zoned = R-6
- 11. Carol C. Herndon, 548 Bryson Circle, Hahira, GA 31632, Tax Map 0048 175, Zoned = R-6
- 12. Ashok & Madhu Kumar, 545 Bryson Circle, Hahira, GA 31632, Tax Map 0048 176, Zoned = R-6
- 13. Wanda A. Paulk, 541 Bryson Circle, Hahira, GA 31632, Tax Map 0048 177, Zoned = R-6
- 14. D. Williams, 537 Bryson Circle, Hahira, GA 31632, Tax Map 0048 178, Zoned = R-6
- 15. Sheri Ann Wright, 533 Bryson Circle, Hahira, GA 31632, Tax Map 0048 179, Zoned = R-6
- 16. Amanda M. Cook, 529 Bryson Circle, Hahira, GA 31632, Tax Map 0048 180, Zoned = R-6
- 17. Mark L. & Melissa J. Dixon, 525 Bryson Circle, Hahira, GA 31632, Tax Map 0048 181, Zoned = R-6
- 18. The City of Hahira, 515 Bryson Circle, Hahira, GA 31632, Tax Map 0048 048, Zoned = R-6
- 19. The City of Hahira, 407 Hahira Highway, Hahira, GA 31632, Tax Map 0048 046, Zoned = R-6
- 20. Shawn Moore Construction LLC, P.O. Box 4627, Hahira, GA 31632, Tax Map 0048 074, Zoned = R-6
- 21. James Wallom & Daniel L. Miley, 105 North Owens Street, Hahira, GA 31632, Tax Map 0048 102A, Zoned = R-6
- 22. Donald L. Miley, 6484 South Herndon Street, Hahira, GA 31632, Tax Map 0048 102, Zoned = E-A

- 23. City of Hahira Georgia, 27. Coastal Maris Bass, 6671 Brookridge Drive, Hahira, GA 31632, Tax Map 0048 043A, Zoned = R-1
- 24. City of Hahira Georgia, 25. Gloria Cooper Johnson ETAL, 6647 NW Cooper Road, Hahira, GA 31632, Tax Map 0048 033, Zoned = E-A
- 25. Gloria Cooper Johnson ETAL, 6647 NW Cooper Road, Hahira, GA 31632, Tax Map 0048 033, Zoned = E-A
- 26. Deborah O. Skinner, 6667 Brookridge Drive, Hahira, GA 31632, Tax Map 0048 043, Zoned = R-1
- 27. Coastal Maris Bass, 6671 Brookridge Drive, Hahira, GA 31632, Tax Map 0048 043A, Zoned = R-1
- 28. Arthur & Willie Mae Washington, 6625 Brookridge Drive, Hahira, GA 31632, Tax Map 0048 042, Zoned = R-1
- 29. Irene Rowe Holloway, 6681 Brookridge Drive, Hahira, GA 31632, Tax Map 0048 041, Zoned = R-1
- 30. John T. Uffom Jr., 6633 Cooper Rd, Hahira, GA 31632, Tax Map 0048 040, Zoned = R-1

CA SOUTHERN & FLORIDA RAILROAD (100' R/W)
 BROOKRIDGE DRIVE (50' R/W)
 COOPER ROAD NW (40' R/W)
 MEADOW CREEK ROAD
 10' RESERVED FOR FUTURE R/W WIDENING