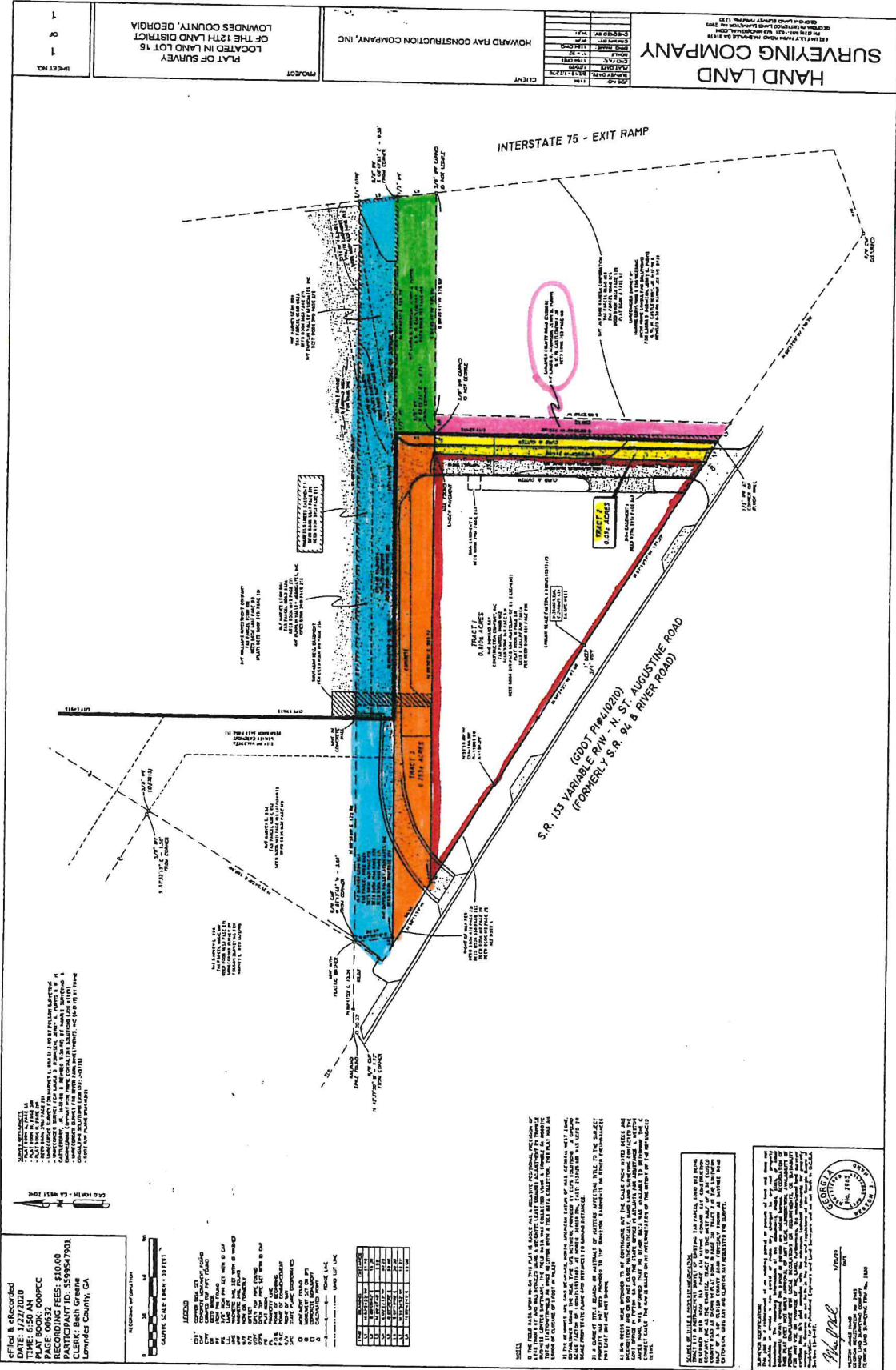


HAND LAND SURVEYING COMPANY

DATE	12/15/2010
TIME	10:00 AM
PROJECT	PLAT OF SURVEY
CLIENT	HOWARD RAY CONSTRUCTION COMPANY, INC.

PLAT OF SURVEY
LOCATED IN LAND DISTRICT
LOWDES COUNTY, GEORGIA

1 OF 1 SHEETS



DATE: 1/27/2010
TIME: 6:50 AM
PLAT BOOK: 000PCC
RECORDING FEES: \$10.00
PARTICIPANT ID: 5595547901
CLERK: Beth Greene
Lowndes County, GA



LEGEND

- 1. UNIMPROVED LAND
- 2. IMPROVED LAND
- 3. UNIMPROVED WOODLAND
- 4. IMPROVED WOODLAND
- 5. UNIMPROVED PASTURE
- 6. IMPROVED PASTURE
- 7. UNIMPROVED CROPLAND
- 8. IMPROVED CROPLAND
- 9. UNIMPROVED WATER
- 10. IMPROVED WATER
- 11. UNIMPROVED SWAMP
- 12. IMPROVED SWAMP
- 13. UNIMPROVED SAND
- 14. IMPROVED SAND
- 15. UNIMPROVED ROCK
- 16. IMPROVED ROCK
- 17. UNIMPROVED DIRT
- 18. IMPROVED DIRT
- 19. UNIMPROVED GRAVEL
- 20. IMPROVED GRAVEL
- 21. UNIMPROVED ASPHALT
- 22. IMPROVED ASPHALT
- 23. UNIMPROVED CONCRETE
- 24. IMPROVED CONCRETE
- 25. UNIMPROVED BRICK
- 26. IMPROVED BRICK
- 27. UNIMPROVED OTHER
- 28. IMPROVED OTHER

NO.	DESCRIPTION	AREA (SQ. FT.)	AREA (ACRES)
1	UNIMPROVED LAND	1,432,000	32.5
2	IMPROVED LAND	0	0
3	UNIMPROVED WOODLAND	0	0
4	IMPROVED WOODLAND	0	0
5	UNIMPROVED PASTURE	0	0
6	IMPROVED PASTURE	0	0
7	UNIMPROVED CROPLAND	0	0
8	IMPROVED CROPLAND	0	0
9	UNIMPROVED WATER	0	0
10	IMPROVED WATER	0	0
11	UNIMPROVED SWAMP	0	0
12	IMPROVED SWAMP	0	0
13	UNIMPROVED SAND	0	0
14	IMPROVED SAND	0	0
15	UNIMPROVED ROCK	0	0
16	IMPROVED ROCK	0	0
17	UNIMPROVED DIRT	0	0
18	IMPROVED DIRT	0	0
19	UNIMPROVED GRAVEL	0	0
20	IMPROVED GRAVEL	0	0
21	UNIMPROVED ASPHALT	0	0
22	IMPROVED ASPHALT	0	0
23	UNIMPROVED CONCRETE	0	0
24	IMPROVED CONCRETE	0	0
25	UNIMPROVED BRICK	0	0
26	IMPROVED BRICK	0	0
27	UNIMPROVED OTHER	0	0
28	IMPROVED OTHER	0	0
TOTAL		1,432,000	32.5

NOTES:

1. THIS PLAT IS A REVISION OF PLAT 14/0220, DATED 12/15/2010, AND IS SUBJECT TO THE SAME TERMS AND CONDITIONS AS THAT PLAT.
2. THE TOTAL AREA OF THIS PLAT IS 1,432,000 SQ. FT. (32.5 ACRES).
3. THE TOTAL AREA OF THE ORIGINAL PLAT WAS 1,432,000 SQ. FT. (32.5 ACRES).
4. THE TOTAL AREA OF THE CHANGES IS 0 SQ. FT. (0 ACRES).
5. THE TOTAL AREA OF THE CHANGES IS 0 SQ. FT. (0 ACRES).
6. THE TOTAL AREA OF THE CHANGES IS 0 SQ. FT. (0 ACRES).
7. THE TOTAL AREA OF THE CHANGES IS 0 SQ. FT. (0 ACRES).
8. THE TOTAL AREA OF THE CHANGES IS 0 SQ. FT. (0 ACRES).
9. THE TOTAL AREA OF THE CHANGES IS 0 SQ. FT. (0 ACRES).
10. THE TOTAL AREA OF THE CHANGES IS 0 SQ. FT. (0 ACRES).

THIS PLAT IS A REVISION OF PLAT 14/0220, DATED 12/15/2010, AND IS SUBJECT TO THE SAME TERMS AND CONDITIONS AS THAT PLAT.

Handwritten signature: *Michael P. Lee*

REGISTERED SURVEYOR
STATE OF GEORGIA
NO. 12345
EXPIRES 12/31/2015

1/27/2010