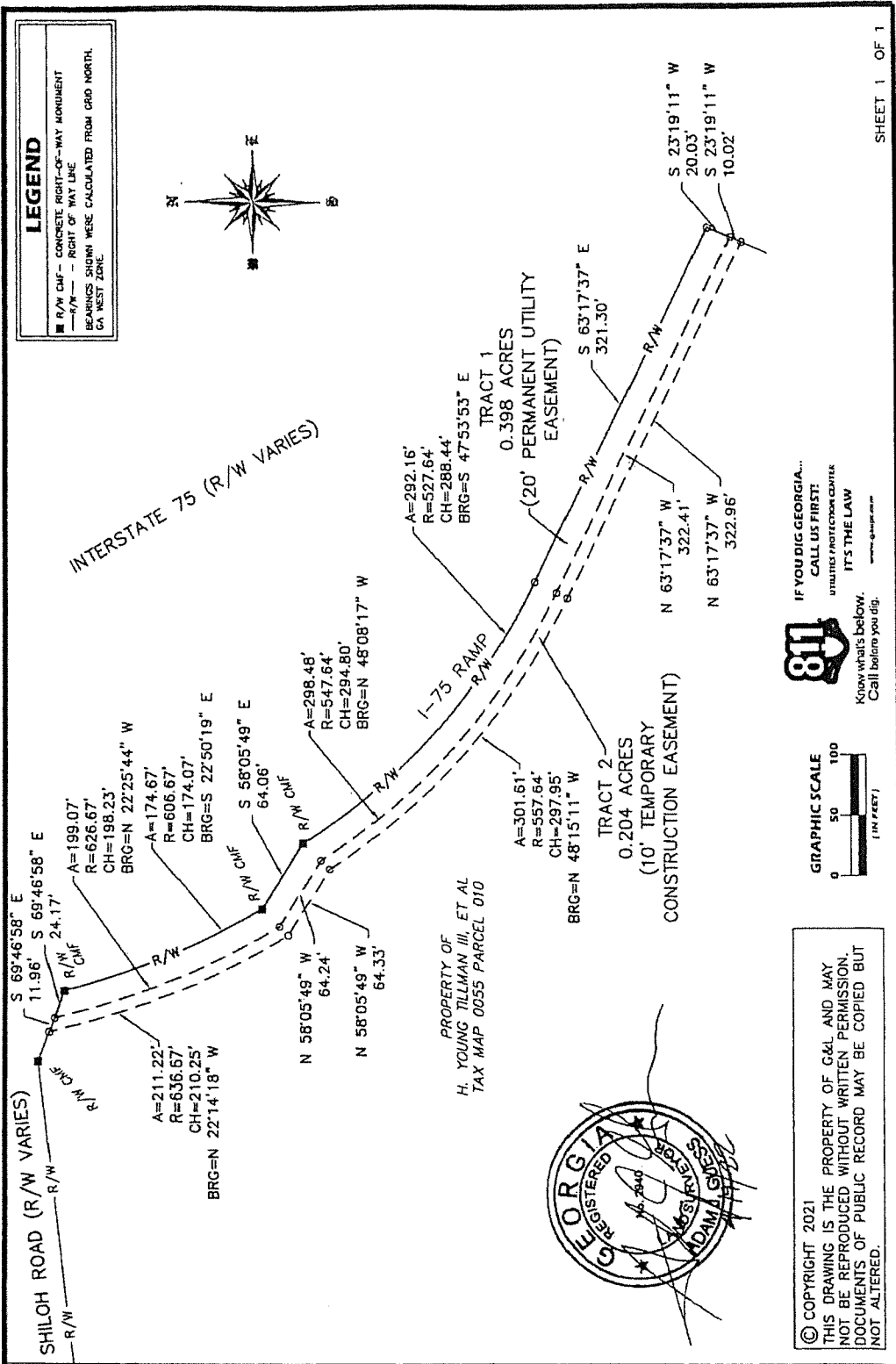
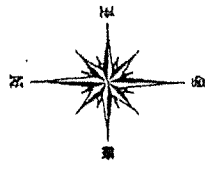
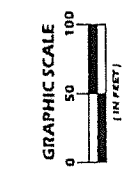


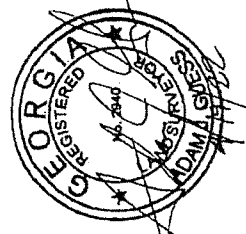
LEGEND
 ■ R/W CMF - CONCRETE RIGHT-OF-WAY MONUMENT
 --- R/W --- RIGHT OF WAY LINE
 BEARINGS SHOWN WERE CALCULATED FROM GRID NORTH,
 GA WEST ZONE.



IF YOU DIG GEORGIA...
 CALL US FIRST!
 UTILITIES PROTECTION CENTER
 IT'S THE LAW
 www.igp.com
 Know what's below.
 Call before you dig.



© COPYRIGHT 2021
 THIS DRAWING IS THE PROPERTY OF G&L AND MAY
 NOT BE REPRODUCED WITHOUT WRITTEN PERMISSION.
 DOCUMENTS OF PUBLIC RECORD MAY BE COPIED BUT
 NOT ALTERED.



ENGINEERING DEPARTMENT
 327 NORTH ASHLEY STREET
 VALDOSTA, GEORGIA 31604

**UTILITY EASEMENT FOR:
 BOARD OF COMMISSIONERS
 OF LOWNDES COUNTY, GA**



LOCATED IN LAND LOT 57
 OF THE 12TH LAND DISTRICT
 LOWNDES COUNTY, GEORGIA
 P.O. Box 2860 • 3998 Inner Perimeter Road • Valdosta, GA 31604
 Telephone: 229-247-1552 • Fax: 229-247-1553 • E-mail: gl@g-sm.com

EASEMENT PLAT #	1
DRAWN BY:	AJG
CHECKED BY:	AJG
DATE OF SURVEY:	06-02-21
DATE OF PLAT:	10-19-21
JOB No.	0001-377

Exhibit A