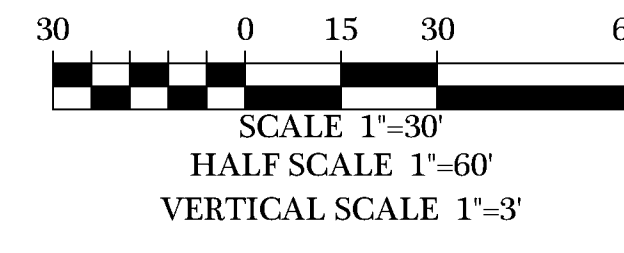
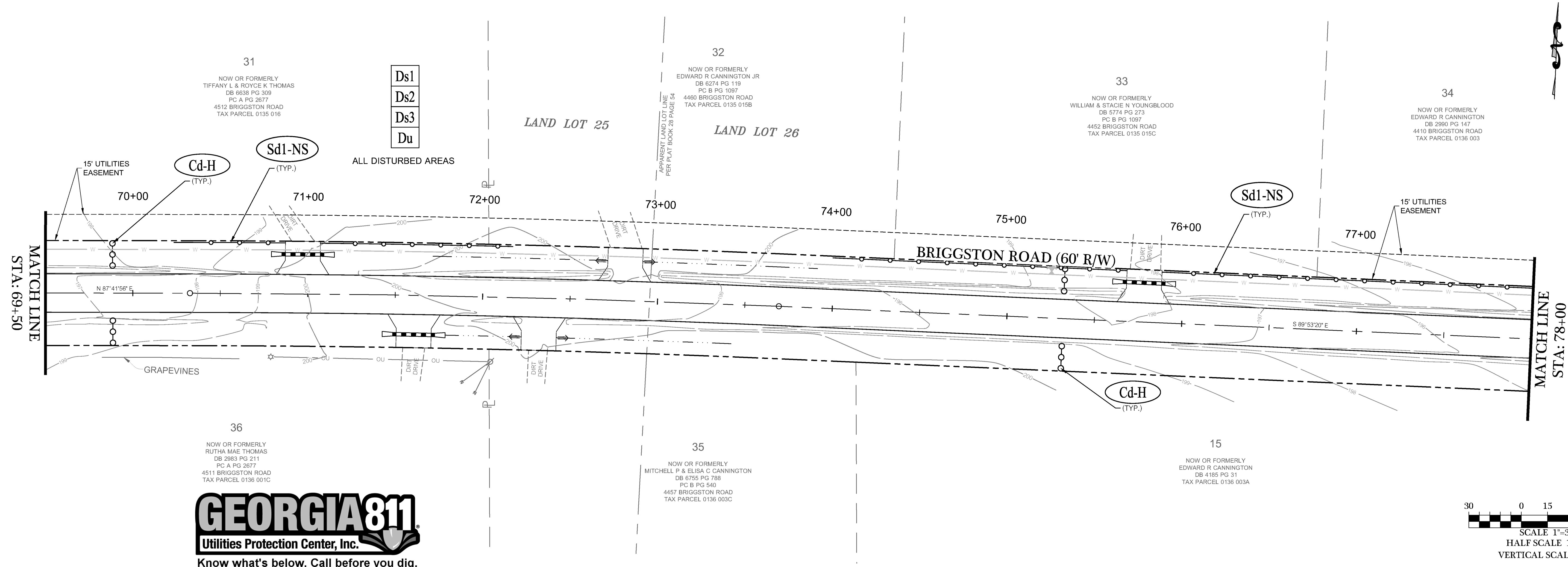


EROSION SYMBOL LEGEND

Sd1-NS	SILT FENCING-NON-SENSITIVE	Ds3	DISTURBED AREA STABILIZATION (WITH PERMANENT SEEDING)
Sd1-S	SILT FENCING-SENSITIVE	Du	DUST CONTROL
Sd2-F	INLET SEDIMENT TRAP - FABRIC	Co	CONSTRUCTION EXIT
Ds1	DISTURBED AREA STABILIZATION (WITH MULCHING ONLY)	St	OUTLET PROTECTION
Ds2	DISTURBED AREA STABILIZATION (WITH TEMPORARY SEEDING)	Cd-H	CHECK DAM-HAY BALE

PROJECT LIMITS EXTEND TO R/W.



REVISIONS

DATE	REVISIONS PER COUNTY COMMENTS
06/24/2022	REVISIONS PER COUNTY COMMENTS
06/24/2022	REVISIONS PER COUNTY COMMENTS
06/24/2022	REVISIONS PER COUNTY COMMENTS
06/24/2022	REVISIONS PER COUNTY COMMENTS
06/24/2022	REVISIONS PER COUNTY COMMENTS

© COPYRIGHT 2022
 THIS DRAWING IS THE PROPERTY OF INNOVATE ENGINEERING & SURVEYING.
 NO PART OF THIS DRAWING OR ANY INFORMATION CONTAINED HEREIN IS TO BE REPRODUCED OR TRANSMITTED IN ANY FORM OR BY ANY MEANS, ELECTRONIC OR MECHANICAL, WITHOUT PERMISSION IN WRITING FROM INNOVATE ENGINEERING & SURVEYING.

**BRIGGSTON ROAD
 PAVING IMPROVEMENTS**
 LOWNEDES COUNTY, GEORGIA
 L.L. 20, 21, 24, 25, & 26 OF THE 16TH L.D.
 & L.L. 70 & 71 OF THE 11TH L.D.

INNOVATE!
 Engineering & Surveying
 PHONE: 229-249-9113 - www.innovatees.com
 2214 N. Patterson Street, Valdosta, GA 31602

GEORGIA
 REGISTERED
 No. 22564
 PROFESSIONAL
 ENGINEER
 WILLIAM D. KENT

LEVEL II CERT. 8141

DATE: 09/14/2022
 DRAWN BY: M. WILSON
 CHECKED BY: B. KENT

SHEET
28 OF 47

PROJECT NUMBER
1669

ES&PC 4

I:\Projects\1669-LCE Briggston Road Paving Project\Civil\Briggston Road 100% Plans\166903-Rd.dwg - 7/14/2023 8:47 AM