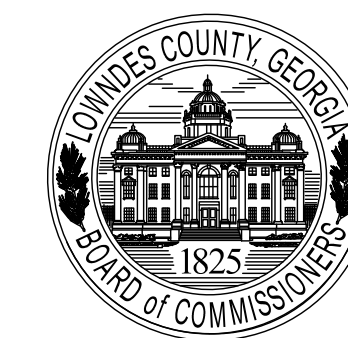




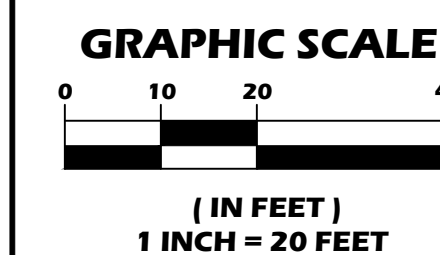
GA CORP# 0419099  
 FL CORP# F0400002135  
 P.O. Box 2830  
 3998 Inner Perimeter Road  
 Valdosta, GA 31604  
 Telephone: 229-253-0900  
 Fax: 229-253-1842  
 E-mail: lea@lea-pc.com

# GROVE POINT LIFT STATION ACCESS



LOWNDES COUNTY  
 STATE OF GEORGIA

REVISIONS	
DATE	DESCRIPTION



SCALE: 1"=20'

DESIGNED BY: MCM

CHECKED BY: MCM

SUBMITTAL DATE: 04/10/23

JOB NO. 0010-148

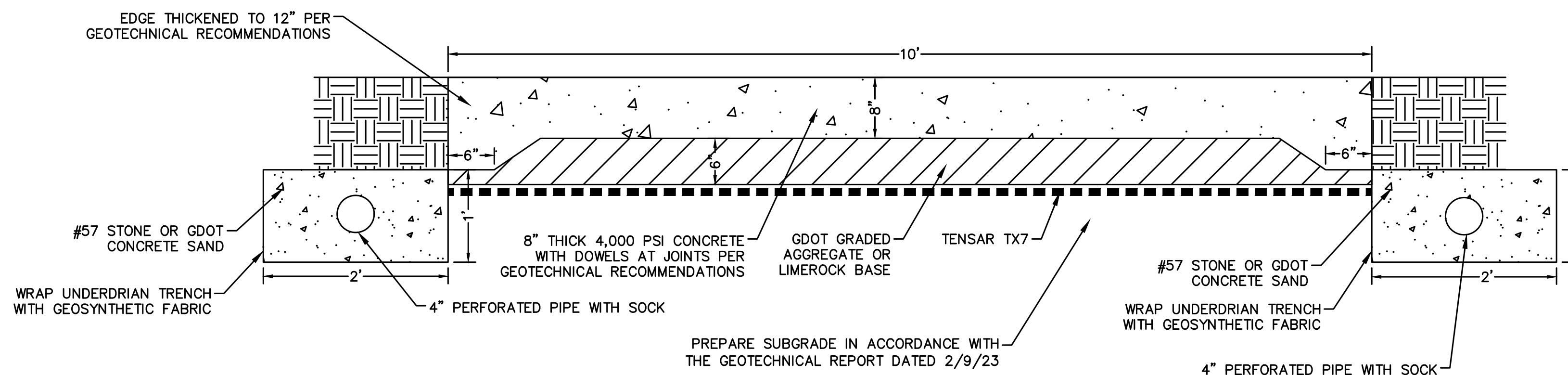
THESE DRAWINGS ARE THE PROPERTY OF THE ENGINEER AND MAY NOT BE REPRODUCED OR REUSED WITHOUT PERMISSION AND CREDIT.  
 © LEA 2022

**NOT FOR CONSTRUCTION**

**PROPOSED SITE PLAN**

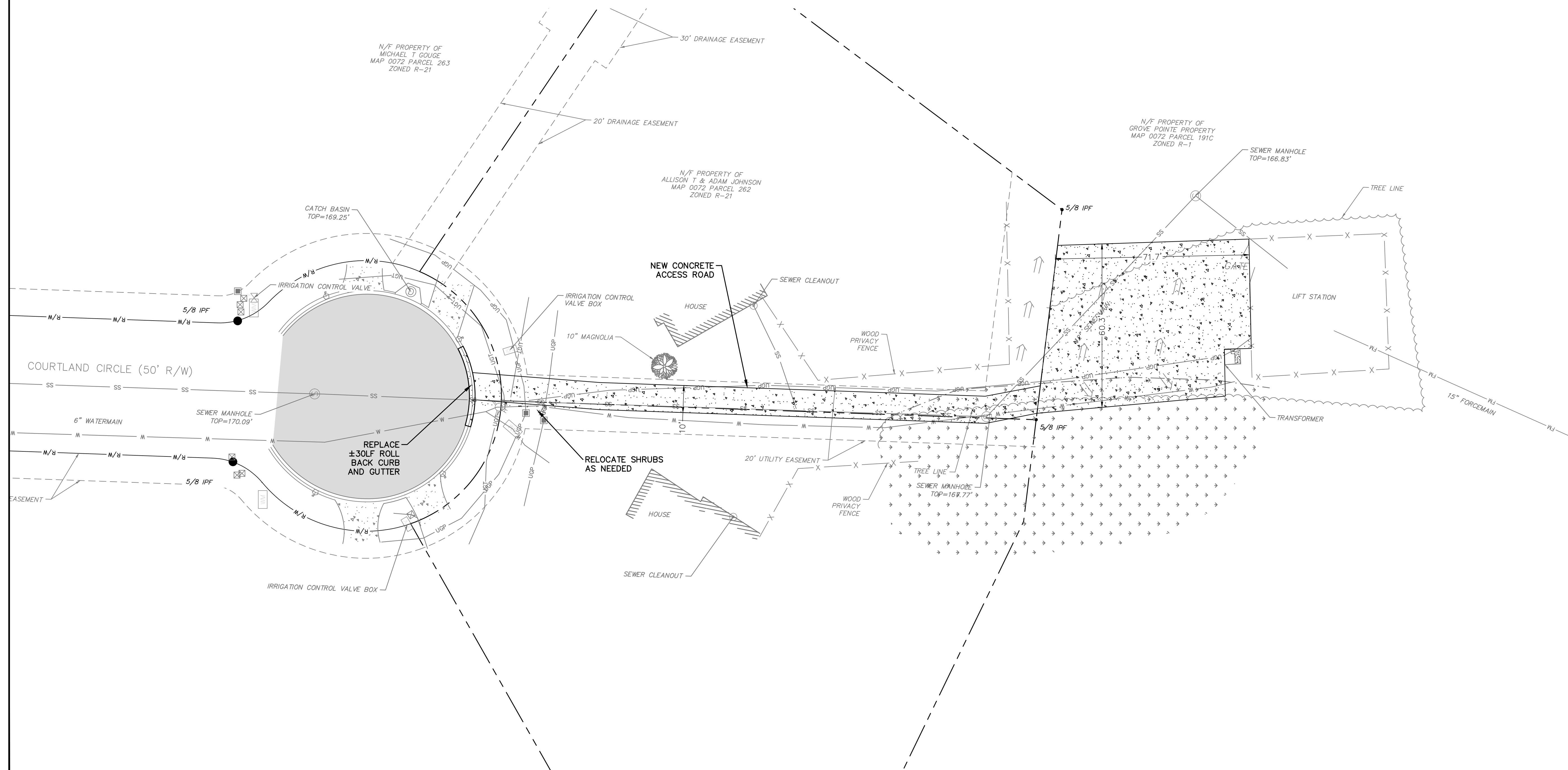
**C-3**

3 OF 4 SHEETS



## ACCESS ROAD SECTION

NTS



S:\0010-148 (Lowndes Co. Grove Point Lift Station Access)\DWG-PRODUCTION\0010-148\_PRODUCTION.dwg 4/10/2023 11:56 AM