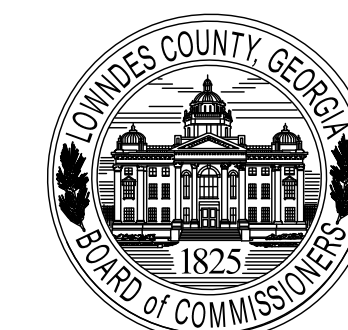




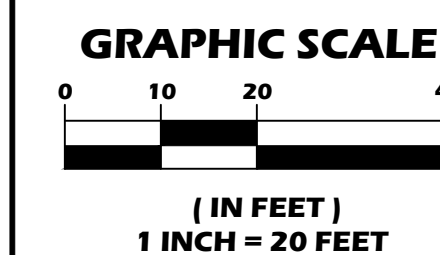
GA CORP# 0419099
 FL CORP# F0400002135
 P.O. Box 2830
 3998 Inner Perimeter Road
 Valdosta, GA 31604
 Telephone: 229-253-0900
 Fax: 229-253-1842
 E-mail: lea@lea-pc.com

GROVE POINT LIFT STATION ACCESS



LOWNDES COUNTY
 STATE OF GEORGIA

REVISIONS	
DATE	DESCRIPTION



SCALE: 1"=20'

DESIGNED BY: MCM

CHECKED BY: MCM

SUBMITTAL DATE: 04/10/23

JOB NO. 0010-148

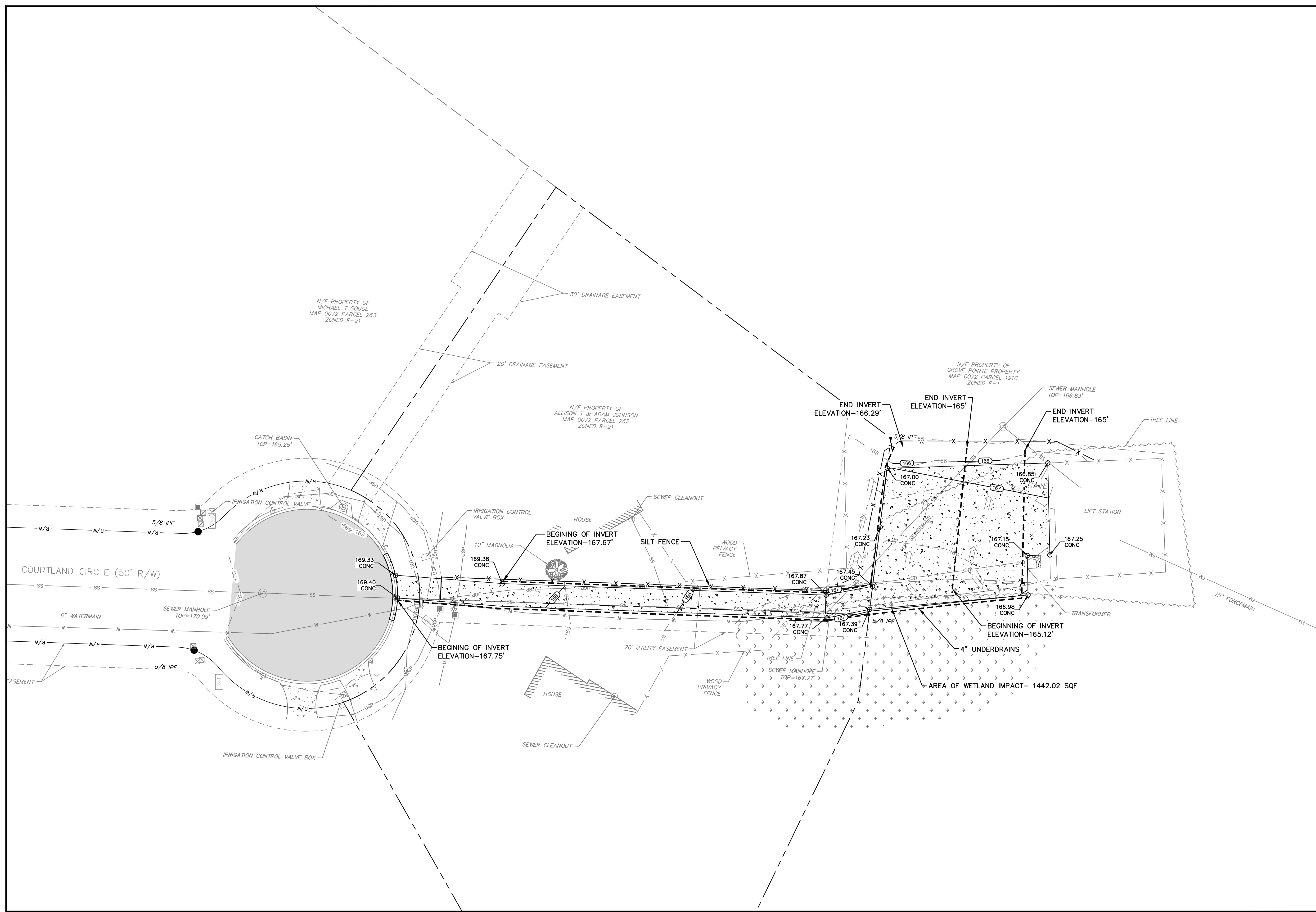
THESE DRAWINGS ARE THE PROPERTY OF THE ENGINEER AND MAY NOT BE REPRODUCED OR REUSED WITHOUT PERMISSION AND CREDIT. © LEA 2022

NOT FOR CONSTRUCTION

PROPOSED GRADING PLAN

C-4

4 OF 4 SHEETS



S:\0010-148 (Lowndes Co. Grove Point Lift Station Access)DWG-PRODUCTION\0010-148_PRODUCTION.dwg 4/10/2023 11:56 AM