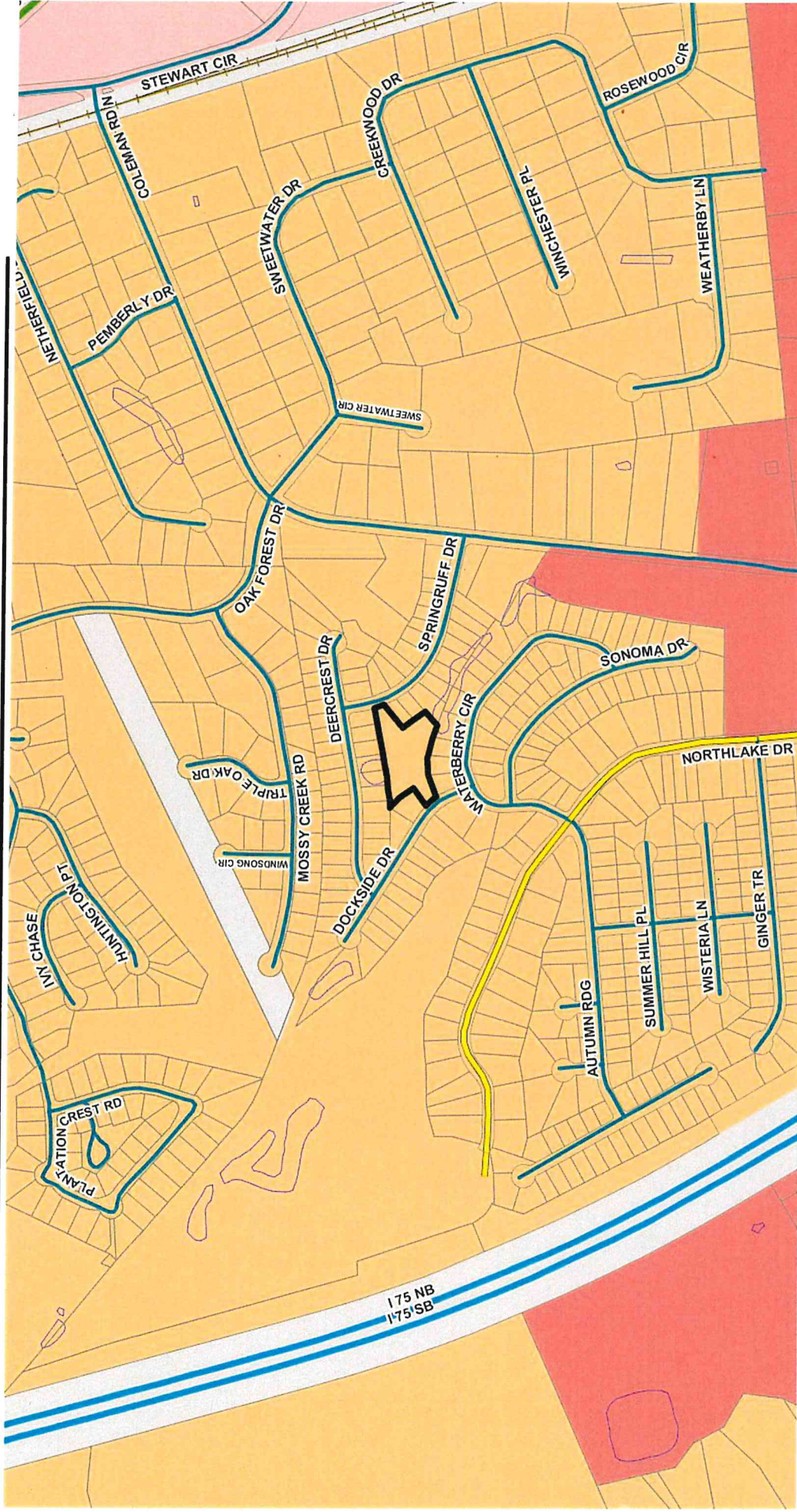


SSMT HOLDINGS Variance Request



Roads

Functional Classification

- 1. INTERSTATE
- 3. OTHER PRINCIPAL ARTERIAL
- 4. MINOR ARTERIAL
- 5. MAJOR COLLECTOR
- 6. MINOR COLLECTOR
- 7. LOCAL

—+— Railroads

Urban Service Area

- City Limits
- Parcels
- Open Water

N
W
E
S

LOWNDES COUNTY, GEORGIA
BOARD OF COMMISSIONERS

0 290 580 1,160 Feet

Visit VALOR on the web at: WWW.VALORGIS.COM

- Neighborhood Activity Center
- Park/Recreation/Conservation
- Public / Institutional
- Regional Activity Center
- Ramotham Neighborhood Village
- Rural Activity Center
- Rural Residential
- Suburban Area
- Transitional Neighborhood
- Transportation/Communication/Utilities
- Agriculture / Forestry
- Community Activity Center
- Downtown
- Established Residential
- Industrial Activity Center
- Industrial Area
- Institutional Activity Center
- Linear Greenpace/Trails
- Mill Town
- Moody Activity Zone