

P:\C\ChickfilA\2019\0663 - CFA - Special Projects - FSU 2444 - North Valdosta, Valdosta, GA\3 CAD & Drawings\1 Preliminaries\3 Civil\EXHIBIT\PROPOSED.dwg, Layout1, 10/30/2019 2:48:46 PM, jorher, DWG To PDF.pc3, ANSI full bleed A (8.50 x 11.00 inches), 1:1

PARKING REQUIREMENTS

PARKING RATIO = 14 SPACES PER 1,000 S.F. OF GROSS FLOOR AREA

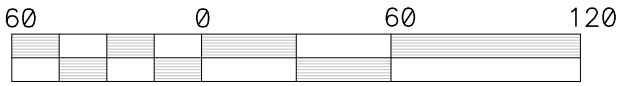
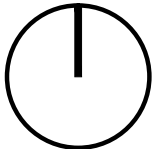
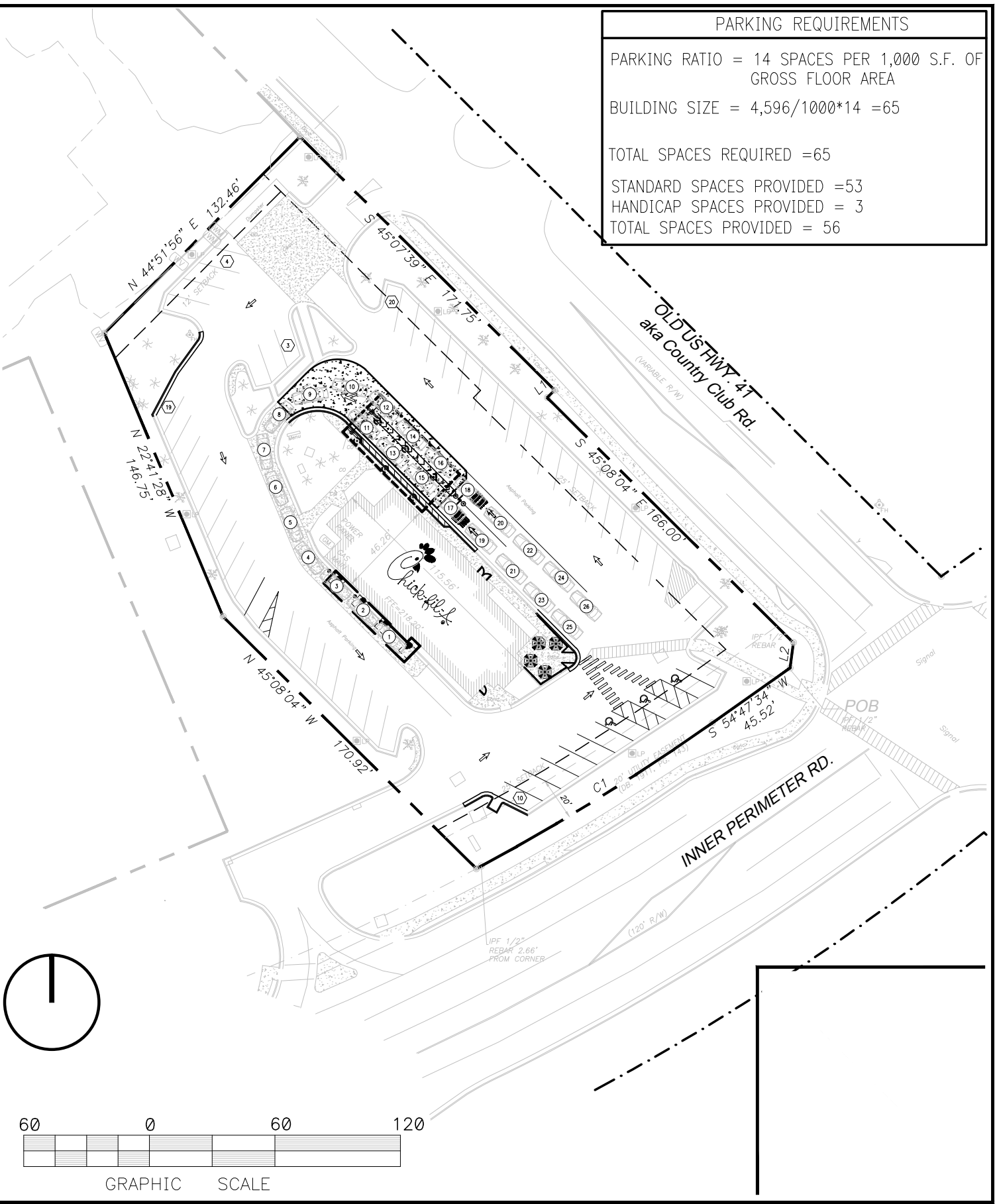
BUILDING SIZE = 4,596/1000\*14 =65

TOTAL SPACES REQUIRED =65

STANDARD SPACES PROVIDED =53

HANDICAP SPACES PROVIDED = 3

TOTAL SPACES PROVIDED = 56



GRAPHIC SCALE



ARCHITECTURE  
ENGINEERING  
INTERIOR DESIGN  
PROJECT MANAGEMENT

604 COURTLAND STREET  
SUITE 100  
ORLANDO, FLORIDA 32804  
PH 407.645.5008  
FX 407.629.9124

FSU 2444

CHICK-FIL-A

3147 INNER PERIMETER ROAD  
VALDOSTA, GA



5200 Buffington Rd.  
Atlanta Georgia,  
30349-2998

PROJECT NO: 2019.0663

DATE: 10-30-19

PROPOSED

DRAWN: JFH CHECKED: SA